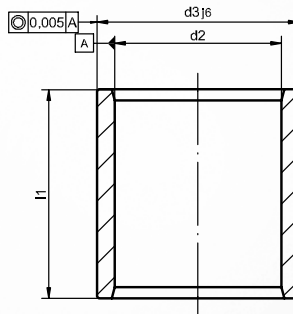


ST7406 Guide bush

smooth



Referring to DIN 9831 / ISO 9448

Material

Steel 1.3505 (100 Cr6); hardened

Hardness

64 ±1 HRC

Installation instruction

Secure with adhesive; do not press in; one-sided entry chamfer or centring attachment

Installation in mounting bore

ISO G6

Optional accessories

SZ9742

d_1^{h3}	d_2	d_3^{j6}	l_1	Item number
10	14	22	23	ST7406 10 x 023
			30	ST7406 10 x 030
			37	ST7406 10 x 037
12	16	22	23	ST7406 12 x 023
			30	ST7406 12 x 030
			37	ST7406 12 x 037
15	21	28	23	ST7406 15 x 023
			30	ST7406 15 x 030
			37	ST7406 15 x 037
			47	ST7406 15 x 047
			60	ST7406 15 x 060
16	22	28	23	ST7406 16 x 023
			30	ST7406 16 x 030
			37	ST7406 16 x 037
			47	ST7406 16 x 047
			60	ST7406 16 x 060
19	25	32	23	ST7406 19 x 023
			30	ST7406 19 x 030
			37	ST7406 19 x 037
			47	ST7406 19 x 047
			60	ST7406 19 x 060
20	26	32	23	ST7406 20 x 023
			30	ST7406 20 x 030
			37	ST7406 20 x 037
			47	ST7406 20 x 047
			60	ST7406 20 x 060
24	30	40	23	ST7406 24 x 023
			30	ST7406 24 x 030

d_1^{h3}	d_2	d_3^{j6}	l_1	Item number
24	30	40	37	ST7406 24 x 037
			47	ST7406 24 x 047
			60	ST7406 24 x 060
25	31	40	23	ST7406 25 x 023
			30	ST7406 25 x 030
			37	ST7406 25 x 037
			47	ST7406 25 x 047
30	38	48	30	ST7406 30 x 030
			37	ST7406 30 x 037
			47	ST7406 30 x 047
			60	ST7406 30 x 060
			77	ST7406 30 x 077
32	40	48	30	ST7406 32 x 030
			37	ST7406 32 x 037
			47	ST7406 32 x 047
			60	ST7406 32 x 060
			77	ST7406 32 x 077
38	46	58	30	ST7406 38 x 030
			37	ST7406 38 x 037
			47	ST7406 38 x 047
			60	ST7406 38 x 060
			77	ST7406 38 x 077
40	48	58	30	ST7406 40 x 030
			37	ST7406 40 x 037
			47	ST7406 40 x 047
			60	ST7406 40 x 060
			77	ST7406 40 x 077

d_1^{h3}	d_2	d_3^{j6}	l_1	Item number
40	48	58	37	ST7406 40 x 037
			47	ST7406 40 x 047
			60	ST7406 40 x 060
			77	ST7406 40 x 077
48	56	70	37	ST7406 48 x 037
			47	ST7406 48 x 047
			60	ST7406 48 x 060
			77	ST7406 48 x 077
			95	ST7406 48 x 095
50	58	70	37	ST7406 50 x 037
			47	ST7406 50 x 047
			60	ST7406 50 x 060
			77	ST7406 50 x 077
			95	ST7406 50 x 095
60	70	85	60	ST7406 60 x 060
			77	ST7406 60 x 077
			95	ST7406 60 x 095
			120	ST7406 60 x 120
			135	ST7406 60 x 135
63	73	85	60	ST7406 63 x 060
			77	ST7406 63 x 077
			95	ST7406 63 x 095
			120	ST7406 63 x 120
80	92	105	120	ST7406 80 x 120
			135	ST7406 80 x 135