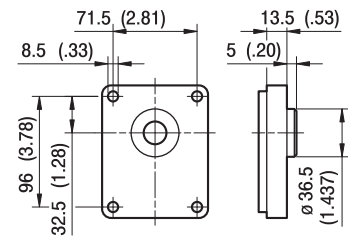


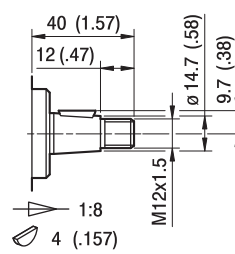
GHP2

FLANGE / FLANGES

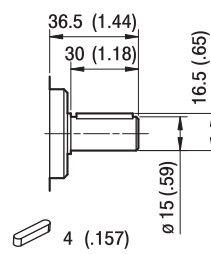


A3

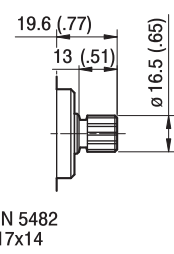
ALBERI / SHAFTS



T0



C0



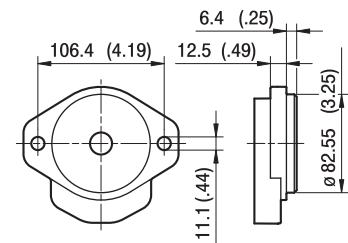
DIN 5482
B17x14

S0

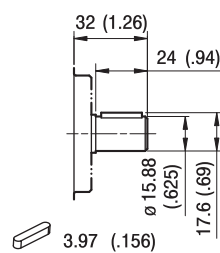
Coppia Max
Max Torque 145 Nm

Coppia Max
Max Torque 125 Nm

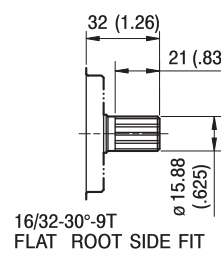
Coppia Max
Max Torque 130 Nm



A



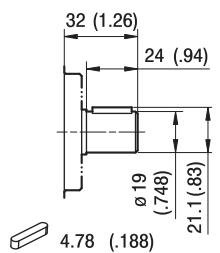
C1



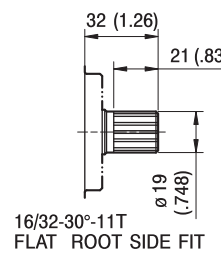
S1

Coppia Max
Max Torque 105 Nm

Coppia Max
Max Torque 110 Nm



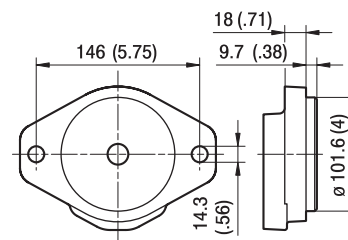
C2



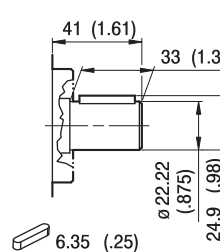
S2

Coppia Max
Max Torque 150 Nm

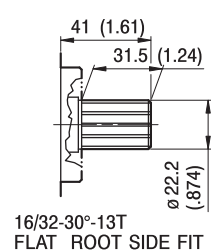
Coppia Max
Max Torque 230 Nm



A3



C3



S5

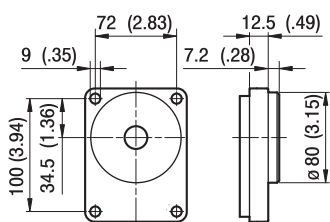
Coppia Max
Max Torque 130 Nm

Coppia Max
Max Torque 130 Nm

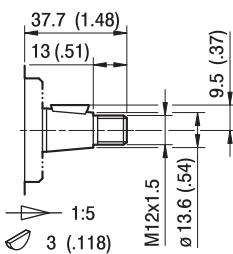
GHP2

FLANGE / FLANGES

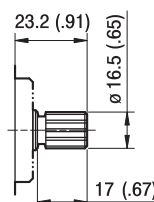
ALBERI / SHAFTS



BK1



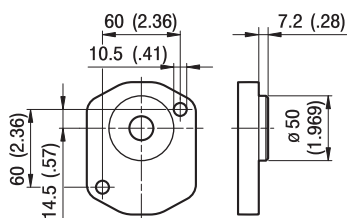
T1



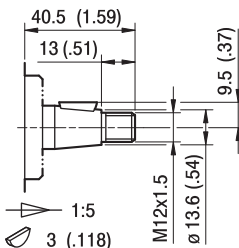
S3

Coppia Max
Max Torque 130 Nm

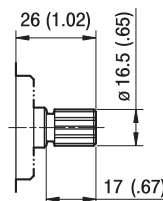
DIN 5482
B17x14
Coppia Max
Max Torque 130 Nm



BK2



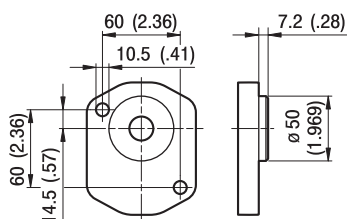
T2



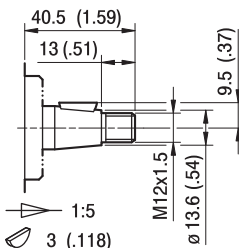
S4

Coppia Max
Max Torque 130 Nm

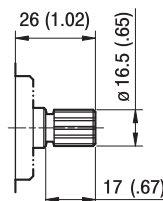
DIN 5482
B17x14
Coppia Max
Max Torque 130 Nm



BK4



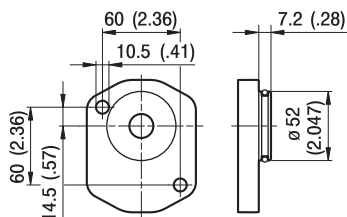
T2



S4

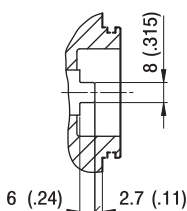
Coppia Max
Max Torque 130 Nm

DIN 5482
B17x14
Coppia Max
Max Torque 130 Nm



BK7

OR 3181

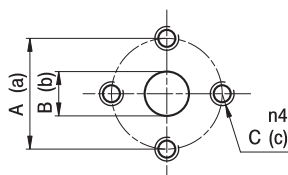


G0

Coppia Max
Max Torque 105 Nm

GHP2

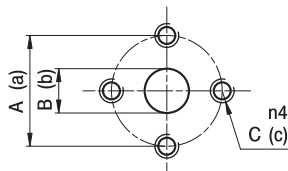
PORTE / PORTS



E

TIPO TYPE	ASPIRAZIONE INLET			MANDATA OUTLET		
	A	B	C	a	b	c
GHP2...6 ÷ GHP2...9	30	13	M6	30	13	M6
GHP2...10 ÷ GHP2...13	40	13	M8	40	13	M8
GHP2...16 ÷ GHP2...25	40	19	M8	40	13	M8
GHP2...30 ÷ GHP2...40	40	19	M8	40	19	M8
GHP2...50	40	21	M8	40	19	M8

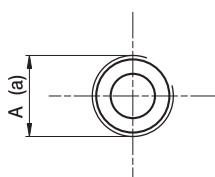
I valori delle coppie di serraggio delle viti presenti nel kit raccordo sono indicate a pag 55 (capitolo accessori)
Tightening torques of the fittings screws are specified on page 55 (accessories section)



EP

TIPO TYPE	ASPIRAZIONE INLET			MANDATA OUTLET		
	A	B	C	a	b	c
GHP2...6	40	13	M8	30	13	M6
GHP2...10 ÷ GHP2...13	30	13	M6	30	13	M6
GHP2...16 ÷ GHP2...40	40	19	M8	30	13	M6
GHP2...50	40	21	M8	30	19	M6

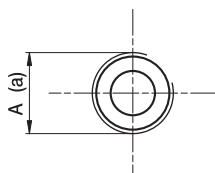
I valori delle coppie di serraggio delle viti presenti nel kit raccordo sono indicate a pag 55 (capitolo accessori)
Tightening torques of the fittings screws are specified on page 55 (accessories section)



FG

TIPO TYPE	ASPIRAZIONE INLET	MANDATA OUTLET
	A	a
GHP2...6 ÷ GHP2...16	G1/2	G1/2
GHP2...20 ÷ GHP2...40	G3/4	G1/2

Raccordo G1/2 coppia di serraggio massima 50 Nm. Raccordo G3/4 coppia di serraggio massima 60 Nm.
Consigliamo di richiedere conferma al fornitore del raccordo.
Tightening torques for G1/2 fitting: 50 Nm. Tightening torques for G3/4 fitting: 60 Nm. Please check with the fittings suppliers.



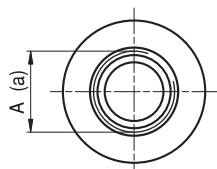
FC

TIPO TYPE	ASPIRAZIONE INLET	MANDATA OUTLET
	A	a
GHP2...6 ÷ GHP2...16	Rc1/2	Rc1/2
GHP2...20 ÷ GHP2...40	Rc3/4	Rc1/2

Raccordo Rc1/2 coppia di serraggio massima 50 Nm. Raccordo Rc3/4 coppia di serraggio massima 60 Nm.
Consigliamo di richiedere conferma al fornitore del raccordo.
Tightening torques for Rc1/2 fitting: 50 Nm. Tightening torques for Rc3/4 fitting: 60 Nm. Please check with the fittings suppliers.

GHP2

PORTE / PORTS

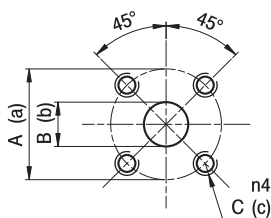


STANDARD SAE J1926/1

FA

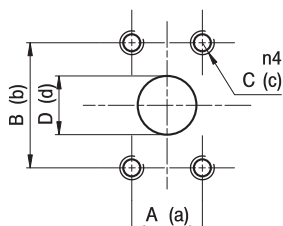
TIPO TYPE	ASPIRAZIONE INLET	MANDATA OUTLET
	A	a
GHP2...6 ÷ GHP2...40	1 1/16-12 UN	7/8-14 UNF
GHP2...50	1 5/16-12 UNF	7/8-14 UNF

Raccordo 7/8-14 UNF coppia di serraggio massima 70 Nm. Raccordo 1 1/16-12 UNF coppia di serraggio massima 70 Nm. Raccordo 1 5/16-12 UNF coppia di serraggio massima 80 Nm. Consigliamo di richiedere conferma al fornitore del raccordo.
 Tightening torques for 7/8-14 UNF fitting: 70 Nm. Tightening torques for 1 1/16-12 UNF fitting: 70 Nm. Tightening torques for 1 5/16-12 UNF fitting: 80 Nm. Please check with the fittings suppliers.


D

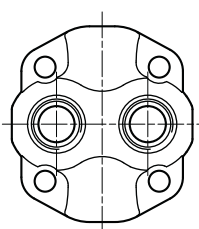
TIPO TYPE	ASPIRAZIONE INLET			MANDATA OUTLET		
	A	B	C	a	b	c
GHP2...6 ÷ GHP2...12	40	15	M6	35	15	M6
GHP2...13 ÷ GHP2...40	40	20	M6	35	15	M6

I valori delle coppie di serraggio delle viti presenti nel kit raccordo sono indicate a pag 55 (capitolo accessori)
 Tightening torques of the fittings screws are specified on page 55 (accessories section)


A

TIPO TYPE	ASPIRAZIONE INLET				MANDATA OUTLET			
	A	B	C	D	a	b	c	d
GHP2...6 ÷ GHP2...22	17,48	38,1	5/16-18 UNC	13	17,48	38,1	5/16-18 UNC	13
GHP2...25	22,23	47,63	3/8-16 UNC	19	17,48	38,1	5/16-18 UNC	13
GHP2...30 ÷ GHP2...40	22,23	47,63	3/8-16 UNC	19	22,23	47,63	3/8-16 UNC	19

I valori delle coppie di serraggio delle viti presenti nel kit raccordo sono indicate a pag 55 (capitolo accessori)
 Tightening torques of the fittings screws are specified on page 55 (accessories section)


KA

Opzione KA

Le porte di aspirazione e mandata sono posizionate sul coperchio.
 Sono disponibili le versioni FG e FA (per le dimensioni, vedi le relative tabelle).

KA Option

Outlet and Inlet Ports are located in the cover.
 FG and FA versions are available (for details about dimensions, please refer to the specific tables).