

# 17. PNEUMATICS

Actuators	p. 418	Silencers	p. 499
Shock absorbers	p. 418	Screwing systems	p. 502
Vacuum pumps	p. 517	Plugs	p. 503
Magnetic sensors	p. 421	Vacuum technique	p. 506
Cylinders	p. 422	Non Sparking Tubes	p. 507
Quick couplings	p. 427	Antistatic tubes	p. 507
Automatic quick couplings	p. 430	Self-retracting tubes	p. 507
Safety quick couplings	p. 434	Polyamide tubes	p. 508
Metallic quick couplings	p. 434	Polyurethane Tubes	p. 509
Ejectors	p. 443	PVC pipes	p. 510
Punch taps	p. 444	Spiral tubes	p. 511
Filtering groups	p. 444	Guiding units	p. 514
Valves	p. 447	Machining units	p. 514
Pneumatic logic	p. 448	Valves and solenoid valves	p. 519
Engines	p. 449	Distribution valves	p. 521
Grippers	p. 450	Universal brass valves	p. 522
Angular grippers	p. 515	Universal stainless steel valves.	p. 529
Parallel grippers	p. 516	Suction cups	p. 531
Blow Guns	p. 452		
Tailpiece fittings	p. 453		
Adapter fittings	p. 453		
Non-return fittings	p. 455		
Sensor fittings	p. 456		
Soft start fittings	p. 456		
Lock fittings	p. 457		
Greasing fittings	p. 458		
Stainless steel push-in fittings	p. 464		
LF-3000 push-in fittings	p. 464		
LF-3600 push-in fittings	p. 473		
Reducing fittings	p. 478		
Regulating fittings	p. 479		
Universal brass fittings	p. 486		
Universal stainless steel fittings.	p. 496		
Regulators	p. 497		
Timers	p. 498		
Pneumoelectric pressure switches	p. 499		



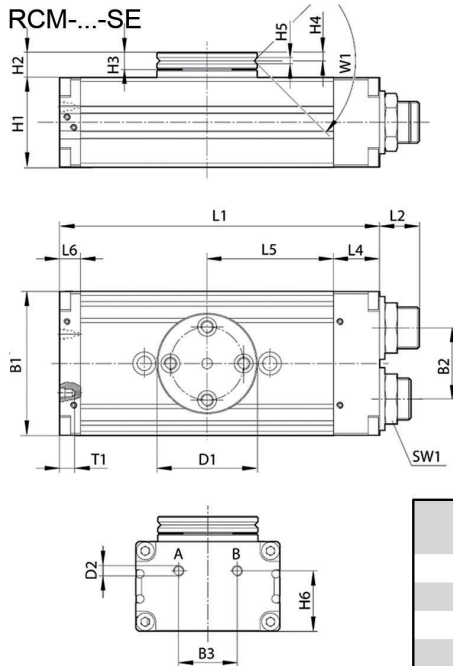
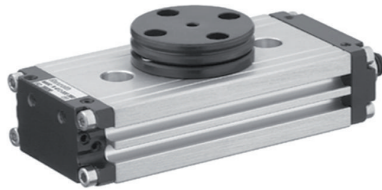


>>> Turn actuators



At www.rodavigo.net Family: Pneumatics  
Product: Pneumatics Mannesmann Mecman Cpoac Bosch Rexroth

Rotary module, RCM-SE Series



build size		RCM-06	RCM-08	RCM-12	RCM-16	RCM-20	RCM-25
Max axial bearing load admissible	[N]	170	280	330	490	620	1160
Max radial bearing load admissible	[N]	170	300	360	580	780	1480
Max mass moment of inertia admissible	[kgcm <sup>2</sup> ]	0,08	0,25	0,7	1,6	3,2	6,3
Repeat accuracy	[°]	0,2	0,2	0,2	0,2	0,2	0,2
Theoretical turning torque	[Nm]	0,17	0,33	0,95	1,7	3	6,5

Code	build size	Connection of compressed air	Angle of turn [°]	Time of turn min./max. [s]	Air consumption per turn [cm <sup>3</sup> ]	Weight per turn [kg]
618R412000357	RCM-06	M3	0 - 90	0,08 / --	1,13	0,13
618R412000358	RCM-06	M3	0 - 180	0,12 / --	2,26	0,13
618R412000359	RCM-08	M3	0 - 90	0,1 / --	2,14	0,18
618R412000360	RCM-08	M3	0 - 180	0,16 / --	4,27	0,18
618R412000361	RCM-12	M5	0 - 90	0,1 / --	5,86	0,42
618R412000362	RCM-12	M5	0 - 180	0,16 / --	11,72	0,42
618R412000363	RCM-16	M5	0 - 90	0,13 / --	10,36	0,7
618R412000364	RCM-16	M5	0 - 180	0,2 / --	20,71	0,7
618R412000365	RCM-20	M5	0 - 90	0,16 / --	17,92	0,91
618R412000366	RCM-20	M5	0 - 180	0,25 / --	35,84	0,91
618R412000367	RCM-25	M5	0 - 90	0,16 / --	38,75	1,73
618R412000368	RCM-25	M5	0 - 180	0,25 / --	77,5	1,73

build size	B1	B2	B3	Ø D1	Ø D2	H1	H2	H3	H4	H5	H6	L1	L2	L4	L5	L6	SW1	T1	W1
RCM-06	31	13,6	11,6	26	M3	17	7,5	5	2,4	2	12,9	71	9	7	28,5	7	8	3	90°
RCM-08	35	15	13	28	M3	18	8	5	2,4	2	14	77	9,5	7	31,5	7	10	3	90°
RCM-12	43	18	18	35	M5	24	10,5	6	2,9	2,5	18	103	12,5	14	40	9	15	4	90°
RCM-16	52	24	20	40	M5	32	10	7	3,3	2,5	21	108	15	18	40	10	19	4	90°
RCM-20	58	30	20	42	M5	37	11	7	3,3	3	26	114	15	19	43	9	19	4	90°
RCM-25	69	34	28	48	M5	43	12	8	4	3	29	153	19	22	60,5	10	23	4	90°

Industrial Shock Absorber, SA2-RC Series



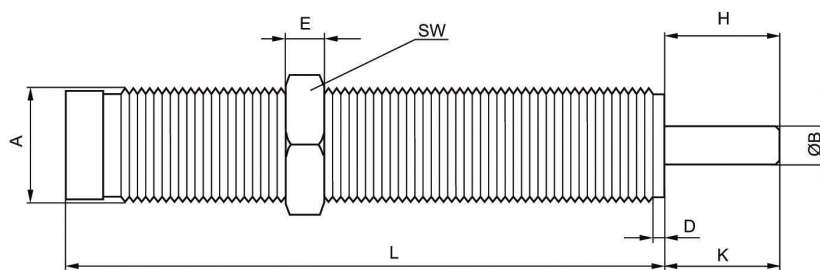
Code	Type	Stroke [mm]	Effective mass me min./max. [kg]	Strength of recovery spring min./max. [N]	Consume of energy / stroke max. [Nm]	Consume of energy / hour max. [Nm/h]
618R412004751	SA2-RC	6	2,8 / 70	2,5 / 6	4	14400
618R412004752		6	6 / 280	3,5 / 8	9	21000
618R412004753		8,5	17 / 510	3,5 / 7	16	30000
618R412010089		9,5	100 / 420	23 / 35	20	40000

Code	Type	Fixing thread	ØB	D	E	H	K	L	SW
618R412004751	SA2-RC	M8x1	2,5	2,5	3	9	9	44	11
618R412004752	SA2-RC	M10x1	3	2,5	3	9	9	49,5	13
618R412004753	SA2-RC	M12x1	4	2,5	4	11	11	65	14
618R412010089	SA2-RC	M14x1,5	4	2,5	5	14	14	69	17

Code	Fixing thread	Weight [kg]	Unit of supply
618R412004751	M8x1	0,01	1
618R412004752	M10x1	0,02	
618R412004753	M12x1	0,035	
618R412010089	M14x1,5	0,06	

Dimensions

H = stroke  
A = fixing thread



00132056



## >>> Hydraulic shock absorbers

At [www.rodavigo.net](http://www.rodavigo.net) Family: Pneumatics  
Product: Enidine Material

OEM series



The Enidine Hydraulic Adjustable Series Shock Absorbers offer the most flexible solution in energy absorption for application requirements, when input parameters vary or are undefined.

Simply by turning an adjusting knob, the damping force can be changed to suit a wide range of conditions.

The Enidine OEMXT series provides a low profile adjustment knob that offers metric or imperial thread configuration with stroke lengths from 25 to 150 mm for competitive exchange. The products of the Low-end series (LROEMXT) are available to control speeds as low as 0.08 m / s and propulsion forces as high as 17790 N. The OEMXT and OEM large series are fully serviceable.

### Features and Advantages

Adjustable design lets you "adjust" your desired cushioning and numbered adjustment lock.

- The adjustable design allows you to "adjust" the desired damping and lock the adjustment number.
- The internal hole design provides deceleration, with the most efficient damping characteristics, resulting in one of the lowest reaction forces in the industry.
- Threaded cylinders provide mounting flexibility and increased surface area for improved heat dissipation.
- Optionally incorporated liquids and seal packages can increase the standard operating temperature of (-10°C to 80°C) to (-30°C to 100°C).
- The ISO quality standards as a reliable result of a long-lasting life.
- The operating parameters can be expanded with the use of the low range enidine and high performance products,
- Fully repairable they are available in medium diameter and large caliber.
- Non-adjustable units (CBOEM) can be used for specific application requirements.
- A select variety of finishes maintains original quality and provides the longest resistance and protection against corrosion.

Enidine Adjustable Rate Controls

Code	Reference	(s) Knock mm	F <sub>D</sub> Max. Propelling force		E <sub>T</sub> C Max. Nm/hr
			Tension N	Compression N	
366ADA505MPC	ADA 505 MPC	50,0	2 000	2 000	73 450
366ADA510MPC	ADA 510 MPC	100,0	2 000	1 670	96 050
366ADA515MPC	ADA 515 MPC	150,0	2 000	1 335	118 650
366ADA520MPC	ADA 520 MPC	200,0	2 000	900	141 250
366ADA525MPC	ADA 525 MPC	250,0	2 000	550	163 850
366ADA705MTC	ADA 705 MTC	50,0	11 000	11 000	129 000
366ADA710MTC	ADA 710 MTC	100,0	11 000	11 000	168 000
366ADA715MTC	ADA 715 MTC	150,0	11 000	11 000	206 000
366ADA720MTC	ADA 720 MTC	200,0	11 000	11 000	247 000
366ADA725MTC	ADA 725 MTC	250,0	11 000	11 000	286 000
366ADA730MTC	ADA 730 MTC	300,0	11 000	11 000	326 000
366ADA735MTC	ADA 735 MTC	350,0	11 000	11 000	366 000
366ADA740MTC	ADA 740 MTC	400,0	11 000	11 000	405 000
366ADA745MTC	ADA 745 MTC	450,0	11 000	8 800	444 000
366ADA750MTC	ADA 750 MTC	500,0	11 000	7 500	484 000
366ADA755MTC	ADA 755 MTC	550,0	11 000	6 200	524 000
366ADA760MTC	ADA 760 MTC	600,0	11 000	5 300	563 000
366ADA765MTC	ADA 765 MTC	650,0	11 000	4 500	603 000
366ADA770MTC	ADA 770 MTC	700,0	11 000	4 000	642 000
366ADA775MTC	ADA 775 MTC	750,0	11 000	3 500	681 000
366ADA780MTC	ADA 780 MTC	800,0	11 000	3 100	721 000



At www.rodavigo.net Family: Pneumatics  
Product: Enidine Material

OEM series

Enidine Adjustable Shock Absorbers

Code	Reference	(S) Stroke mm	ET Max. Nm/c	ETC Max. Nm/hr	Cushioning
366OEM01M	OEM 0,1 M	7,0	5,5	12400	D
366OEM01MB	OEM 0,1 MB	7,0	5,5	12400	D
366OEM015M	OEM 0,15 M	10,0	505,0	19000	D
366OEM015MB	OEM 0,15 MB	10,0	505,0	19000	D
366OEM25M	OEM-25 M	10,0	505,0	20000	D
366OEM25MB	OEM-25 MB	10,0	505,0	20000	D
366LROEM025M	LR OEM 0,25 M	10,0	505,0	20000	D
366LROEM025MB	LR OEM 0,25 MB	10,0	505,0	20000	D
366OEM035M	OEM 0,35M	12,0	17,0	34000	D
366OEM035MB	OEM 0,35MB	12,0	17,0	34000	D
366LROEM035M	LR OEM 0,35 M	12,0	17,0	34000	D
366LROEM035MB	LR OEM 0,35 MB	12,0	17,0	34000	D
366OEM5MB	MB 21541	12,0	28,0	32000	D
366LROEM05M	LR OEM 0,5 M	12,0	28,0	32000	D
366LROEM05MB	LR OEM 0,5 MB	12,0	28,0	32000	D
366OEM10M	OEM 1,0M	25,0	74,0	70000	C
366OEM10MB	OEM 1,0MB	25,0	74,0	70000	C
366LROEM10M	LR OEM 1,0 M	25,0	74,0	70000	C
366LROEM10MB	LR OEM 1,0 MB	25,0	74,0	70000	C
366OEM115MX1	OEM 1,15MX1	25,0	195,0	75700	C
366LROEM115MX1	LR OEM 1,15MX1	25,0	195,0	75700	C
366OEM115MX2	OEM 1,15MX2	50,0	385,0	98962	C
366LROEM115MX2	LR OEM 1,15MX2	50,0	385,0	98962	C
366OEM125MX1	OEM 1,25MX1	25,0	195,0	91000	C
366LROEM125MX1	LR OEM 1,25MX1	25,0	195,0	91000	C
366OEM125MX2	OEM 1,25MX2	50,0	385,0	111400	C
366LROEM125MX2	LR OEM 1,25MX2	50,0	385,0	111400	C
366OEM30MX2	OEM 3,0MX2	50,0	2300,0	372000	C
366OEM40MX2	OEM 4,0MX2	50,0	3800,0	1503000	C
366OEM30MX35	OEM 3,0MX3,5	90,0	4000,0	652000	C
366OEM30MX5	OEM 3,0MX5	125,0	5700,0	933000	C
366OEM30M65	OEM 3,0MX6,5	165,0	7300,0	1215000	C
366OEM40MX4	OEM 4,0MX4	100,0	7700,0	1808000	C
366OEM40MX6	OEM 4,0MX6	150,0	11500,0	2012000	C
366OEM40X8	OEM 4,0X8	200,0	15400,0	2407000	C
366OEM40MX10	OEM 4,0MX10	250,0	19200,0	2712000	C

Jarret Shock Absorbents

Code	(S) Stroke mm	Min./Max. Power capacity kJ		Cushioning
366BC1N	12-80	0,1	14	-
366BC5	105-180	25	150	-
366XLR	150-800	6	150	-
366BCLR	400-1300	100	1 000	-

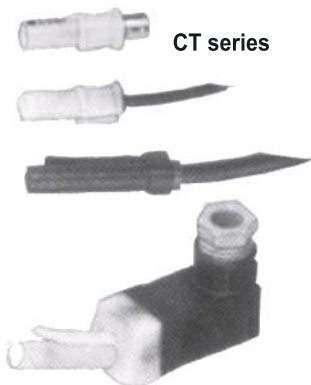
Enidine Non-adjustable Rate Controls

Code	(S) Stroke mm	F <sub>D</sub> Max. Propelling force		E <sub>r</sub> C Max. Nm/C
		Tension N	Compression N	
366DA50MX50	50,0	11 121	11 121	565
366DA50MX100	100,0	11 121	11 121	1120
366DA50MX150	150,0	11 121	11 121	1695
366DA50MX200	200,0	11 121	11 121	2260
366DA75MX50	50,0	22 250	22 250	1120
366DA75MX100	100,0	22 250	22 250	2240
366DA75MX150	150,0	22 250	22 250	3360
366DA75MX200	200,0	22 250	22 250	4480
366DA75MX250	250,0	22 250	22 250	5600
366TB100MX100	100,0	44 482	44 482	4480
366TB100MX150	150,0	44 482	44 482	6779

## >>> Magnetic sensors

At [www.rodavigo.net](http://www.rodavigo.net) Family: Pneumatics  
Product: Parker pneumatic material

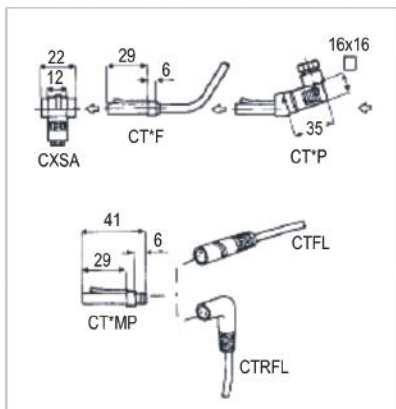
CT series



CT series

### Utilization

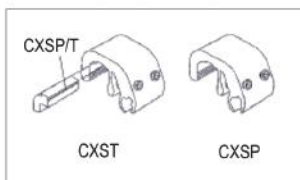
With all pneumatic cylinders ISO 6431-VDMA / DIN24562 from our current program.



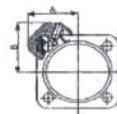
Type	CT2
Nature of contact	ILS
LED display	Yes
Function	NC Circuit Establishment
Work position	Indifferent
Operating temperature	0 a / 0°C
Repeatability precision	0,2mm
Response time	Circuit setting: 1ms Circuit break: 1 ms
Current	-0=
Operating voltage	100V= 240~V
Max intensity	380mA*
Max power	50W-VA
Voltage drop	3V
Electrical protection	Polarized
Protection	IP65
Examples of switched loads	Programmable automatons

Code	Type CT2
068CT2F	Magnetic sensor with incorporated cable length 2m
068CT2P	Sensor with 15x15 connector (incorporated with the captor)
068CT2MP	Sensor for "PICO" connector Ø 8 mm. (*) (The connector must be ordered separately)

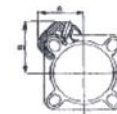
(\*) Axial connector (straight). Ref. CTFL  
(\*) Axial connector (angled). Ref. CTRFL



These supports allow to replace the sensor without losing the position.



For ISO 6431-VDMA tie rod cylinder



For ISO 6431-VDMA lobed sleeve cylinder

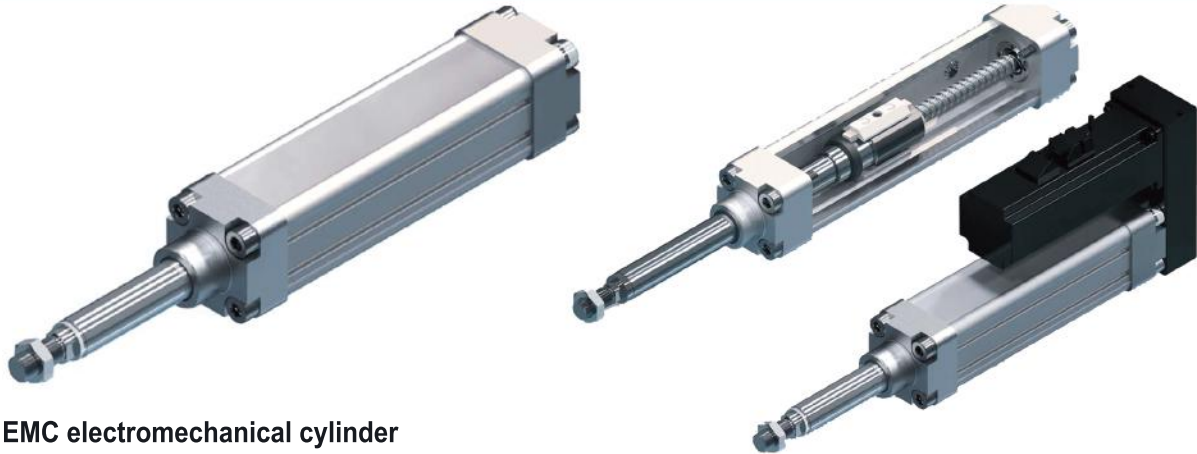
CylinderØ	For ISO 6431-VDMA tie rod cylinder									For ISO 6431-VDMA lobed sleeve cylinder						
	32	40	50	63	80	100	125	160	200	32	40	50	63	80	100	125
Code	068CXST1			068CXST2			068CXST3			068CXSP1		068CXSP2		068CXSP3		
A	31	34	40	45	55	63,5	-	-	-	28	32	28	43	53,5	62	-
B	35,5	39	43,5	48,5	56,5	65	-	-	-	35	40	44	49,5	58,5	66	-

It is also offered as a support for mounting the sensors. CT series on tie rod cylinders. Ø25 to 200 mm. Cod. **068CXSA**



>>> **Cylinder**

EMC electromechanical cylinder



**EMC electromechanical cylinder**

Compared to the fluid drive technique, the solutions with electromechanical drives cause more and more interest in the selection of actuators. The new Rexroth EMC electromechanical cylinder can effectively replace pneumatic cylinders, and often make the user benefit from their advantages in design. In interaction with other technological areas, it also opens doors to new construction possibilities.

Its mechanics are based on the approved drive by precision rolled ball screws, combining all diameters and current steps.

Its particular results, such as positioning precision, axial force or travel speed, can be optimized according to the demands of the application in question.

Oversized LAN angular contact axial ball bearings allow maximum load capacities of the ball screw drive. Numerous selection possibilities are derived for the configuration of the drive and fasteners.

**Advantages of the system**

- Existence of numerous sizes
- Integrated ball screw ensures exact positioning and high drive power
- Varied motor mounting, through flange and coupling or with toothed belt drive
- Compact construction form
- Dynamic drive
- Comprehensive connection program, adapted to the scope of application in question
- Quick assembly
- Compatible with other Bosch Rexroth products
- Anti-corrosive steel rod
- Optimal construction with standard Rexroth components
- Effective due to low number of axes
- Preferential strokes: 100, 200, 320 and 400 mm

**Ball screws used**

Size of EMC	d <sub>0</sub>	Ball screw Step P						
		5	10	16	20	25	32	40
32	12							
40	16							
50	20							
63	25							
80	32							
100	40							

**Fixed EMC lengths**

An EMC with a fixed length has a shorter lead time compared to a configurable EMC.

**Indication:**

The shortest delivery time is valid for an EMC with a fixed length, but without mounting elements.

An EMC with a fixed length is defined as demonstrated in the table. It also has a standard seal, with reduced axial set and a T7 tolerance class.

Size of EMC	Ball screw		References according to strokes (mm)			
	d <sub>0</sub> (mm)	Step P (mm)	100	200	320	400
32	12	5	R156011100	R156011200	-	-
		10	R156012100	R156012200	-	-
40	16	5	R156021100	R156021200	R156021320	R156021400
		10	R156022100	R156022200	R156022320	R156022400
		16	-	R156023200	-	-
50	20	5	R156031100	R156031200	-	R156031400
		20	-	R156034200	-	-
63	25	5	R156041100	R156041200	-	R156041400
		10	-	R156042200	-	R156042400
		25	-	-	-	-
80	32	5	R156051100	R156051200	-	-
		10	-	R156052200	-	R156052400
		20	-	-	-	-
		32	-	-	-	-
100	40	5	-	R156061200	-	-
		10	-	-	-	-
		20	-	-	-	R156064400
		40	-	-	-	-

## >>> Pneumatic cylinders



At [www.rodavigo.net](http://www.rodavigo.net) Family: Pneumatics  
Product: Parker pneumatic material

### P1D Standard Pneumatic Cylinders

#### Common data of the series

- Cylinder diameter** 32-125mm
- Pressure and working temperature** Max. 10 bar/-20°C to +80°C
- Work item** Pressurized and filtered air without lubrication
- Initial lubrication** Transparent grease approved for the food industry
- Barrel** Anodized aluminum with grooves for integrated sensors
- Cylinder heads** Black die-cast anodized aluminum
- Interior details, piston and screw, shock absorber** Injection molded high strength plastics
- Rod and seals** Stainless steel / Polyurethane

#### P1D Standard Data

- Cylinder diameter** 32-125mm
- complies with standards** ISO 6431, ISO/DIN 15 552  
VDMA 24562, AFNOR
- Sensors** Electronics and "drop-in" type network with LEDs  
3/10 m cable. M8 / M12 connectors
- Material** Stainless steel straps

Marked II 2GD cT4 120°C

References: P1D standard **068 P1D-S032MS-0100**

Cylinder version
S standard
C Clean
F Flexible Porting
T Straps

Diameter mm
032
040
050
063
080
100
125

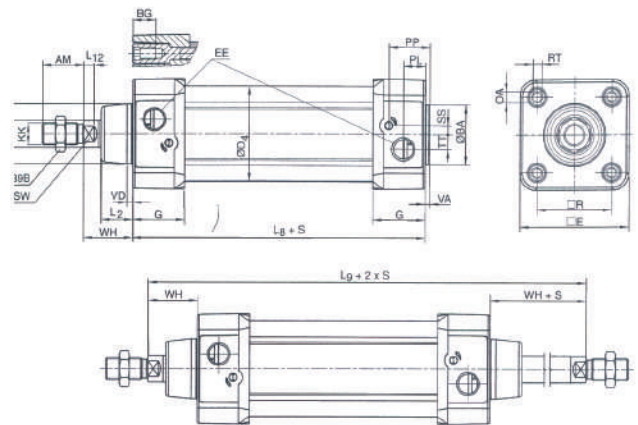
Scrapper cylinder head standard
Standard scrapper
HDPE scrapper
Alum scrapper
Function
M D V Double effect
F E B Double acting and intern rod
2 B B Two cylinder united by rear cylinder head (3 and 4 positions)
C Tandem

Rod material
Stainless steel
Chrome steel
Anitacid steel
Chrome stainless steel
Seals
S C M R standard -20° to + 80°C
F G N D High temperature version -10° to 150°C (Non-magnetic function)
L K P E Low temperature -40°C to +40°C
- J - Z Low pressure hydraulics

Travel (mm)  
Ej. 0100 = 100 mm.  
Optional travels up to 2800 mm.

1) Also available with stainless screws in the cylinder head

FIXINGS ISO 6431 - VDMA / DIN 24562



#### Dimensions

Cylinder	AM	B	BA	BG	D	D4	E	EE	G	KK	L2	L8	L9	L12
32	22	30	30	16	12	45,0	50,0	G1/8	28,5	M10x1,25	16,0	94	146	6,0
40	24	35	35	16	16	52,0	57,4	G1/4	33,0	M12x1,25	19,0	105	165	6,5
50	32	40	40	16	20	60,7	69,4	G1/4	33,5	M16x1,5	24,0	106	180	8,0
63	32	45	45	16	20	71,5	82,4	G3/8	39,5	M16x1,5	24,0	121	195	8,0
80	40	45	45	17	25	86,7	99,4	G3/8	39,5	M20x1,5	30,0	128	220	10,0
100	40	55	55	17	25	106,7	116,0	G1/2	44,5	M20x1,5	32,4	138	240	14,0
125	54	60	60	20	32	134,0	139,0	G1/2	51,0	M27x2	45,0	160	290	18,0

Cylinder	OA	PL	PP	R	RT	SS	SW	TT	VA	VD	WH
32	6,0	13	21,8	32,5	M6	4,0	10	4,5	3,5	4,5	26
40	6,0	14	21,9	38,0	M6	8,0	13	5,5	3,5	4,5	30
50	8,0	14	23,0	46,5	M8	4,0	17	7,5	3,5	5,0	37
63	8,0	16	27,4	56,5	M8	6,5	17	11,0	3,5	5,0	37
80	6,0	16	30,5	72,0	M10	0	22	15,0	3,5	4,0	46
100	6,0	18	35,8	89,0	M10	0	22	20,0	3,5	4,0	51
125	8,0	28	40,5	110,0	M12	0	27	17,5	5,5	5,5	65

#### Tolerances

Cylinder	B	BA	L8	L9	R	Travel tolerance
32	d11	d11	+/-0,4	+/-2	+/-5	+/-1/-0
40	d11	d11	+/-0,7	+/-2	+/-5	+/-1/-0
50	d11	d11	+/-0,7	+/-2	+/-6	+/-1/-0
63	d11	d11	+/-0,8	+/-2	+/-7	+/-1/-0
80	d11	d11	+/-0,8	+/-3	+/-7	+/-1/-0
100	d11	d11	+/-1,0	+/-3	+/-7	+/-1/-0
125	d11	d11	+/-1,0	+/-3	+/-1,1	+/-1/-0

#### Standard scrapper / stainless steel rod

Code	Version	Diameter mm	Travel mm	Code	Version	Diameter mm	Travel mm		
068P1DS032MS0025	STANDARD	32	25	068P1DS100MS0025	STANDARD	100	25		
068P1DS032MS0050			50	068P1DS100MS0040			40		
068P1DS032MS0100			100	068P1DS100MS0050			50		
068P1DS032MS0125			125	068P1DS100MS0100			100		
068P1DS032MS0250			250	068P1DS100MS0125			125		
068P1DS032MS0320		320	068P1DS100MS0320	320					
068P1DS032MS0500		500	068P1DS100MS0500	500					
068P1DS040MS0025		40	40	25		068P1DS125MS0025	125	125	25
068P1DS040MS0040				40		068P1DS125MS0040			40
068P1DS040MS0050				50		068P1DS125MS0050			50
068P1DS040MS0125	125			068P1DS125MS0100	100				
068P1DS040MS0250	250			068P1DS125MS0125	125				
068P1DS040MS0320	320	068P1DS125MS0250	250						
068P1DS040MS0500	500	068P1DS125MS0320	320						
			500	068P1DS125MS0500			500		

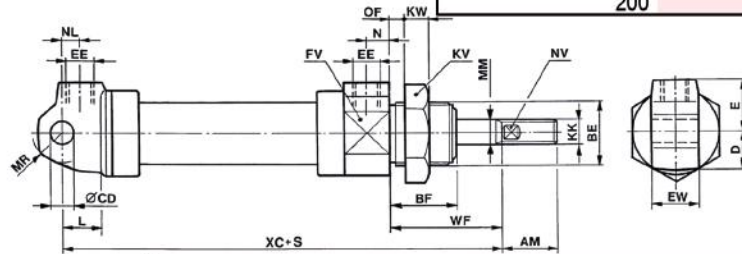








Plunger Ø Plunger rod thread	12 M6 M5	16 M6 M5	20 M8 G 1/8	25 M10x1,25 G 1/8	32 M10x1,25 G 1/8
Stroke 12	6181331201000	6181331601000	6181332001000	6181332501000	-
25	6181331202000	6181331602000	6181332002000	6181332502000	6181333202000
50	6181331205000	6181331605000	6181332005000	6181332505000	6181333205000
80	6181331208000	6181331608000	6181332008000	6181332508000	6181333208000
100	6181331210000	6181331610000	6181332010000	6181332510000	6181333210000
125	-	-	6181332012000	6181332512000	6181333212000
160	-	-	6181332016000	6181332516000	6181333216000
200	-	-	618R402001232	618R402001235	6181333220000



Ø of plunger	[mm]	12	16	20	25	32	
Plunger force during retraction	[N]	53	109	166	260	435	
Plunger force during extraction	[N]	71	127	198	309	506	
Weight	0 mm of stroke	[kg]	0,048	0,054	0,08	0,1	0,26
	+ 10 mm of stroke	[kg]	0,005	0,005	0,01	0,014	0,022
Max. stroke	[mm]	100	250	250	250	250	

Ø of plunger	AM	BE	BF	CD	D	E	EE	EW	FV	KK	KV	KW	L	MM	MR	N	NL	NV	OF 1)	WF	XC
	+0/-2			H11				d13												+1,2	+1
12	16	M16x1,5	20	6	10	13,5	M5	12	20	M6	24	7	9	6	7,5	5	7	4	10	22	75
16	16	M16x1,5	20	6	12	14	M5	12	24	M6	24	7	9	6	7,5	5	6	4	10	22	82
20	20	M22x1,5	22	8	15	18	G 1/8	16	30	M8	30	8	12	8	10	8	7	6	10	24	95
25	22	M22x1,5	22	8	17	18	G 1/8	16	34	M10x1,25	30	8	12	10	10	8	6,5	8	10	28	104
32	22	M30x1,5	29	10	22,5	24	G 1/8	26	46	M10x1,25	41	11	13	12	15	10	10,5	11	14	38	128

### PRA profile cylinder



Ø of plunger	[mm]	32	40	50	63	80	100	125	
Plunger force during retraction	[N]	435	660	1035	1765	2855	4635	7220	
Plunger force during extraction	[N]	505	790	1235	1960	3165	4945	7725	
Damping length	[mm]	11,5	15	17	16,5	19,5	19,5	22	
Damping energy	[J]	4,8	9	15	27	54	88	140	
Weight	0 mm of stroke	[kg]	0,5	0,65	1,06	1,42	2,37	3,51	6,72
	+ 10 mm of stroke	[kg]	0,022	0,032	0,047	0,054	0,085	0,1	0,15
Max. stroke	[mm]	1600	1900	2100	2500	2800	2800	2750	

Plunger Ø Plunger rod thread	32 M10x1,25 G 1/8 12	40 M12x1,25 G 1/4 16	50 M16x1,5 G 1/4 20	63 M16x1,5 G 3/8 20	80 M20x1,5 G 3/8 25	100 M20x1,5 G 1/2 25	125 M27x2 G 1/2 32
Stroke 25	6180822120001	6180822121001	6180822122001	6180822123001	6180822124001	6180822125001	618R480140491
50	6180822120002	6180822121002	6180822122002	6180822123002	6180822124002	6180822125002	618R480140455
80	6180822120003	6180822121003	6180822122003	6180822123003	6180822124003	6180822125003	618R480141371
100	6180822120004	6180822121004	6180822122004	6180822123004	6180822124004	6180822125004	618R480079499
125	6180822120005	6180822121005	6180822122005	6180822123005	6180822124005	6180822125005	618R480140083
160	6180822120006	6180822121006	6180822122006	6180822123006	6180822124006	6180822125006	618R480079809
200	6180822120007	6180822121007	6180822122007	6180822123007	6180822124007	6180822125007	618R480140833
250	6180822120008	6180822121008	6180822122008	6180822123008	6180822124008	6180822125008	618R480141106
320	6180822120009	6180822121009	6180822122009	6180822123009	6180822124009	6180822125009	618R480140759
400	6180822120010	6180822121010	6180822122010	6180822123010	6180822124010	6180822125010	618R480141373
500	6180822120011	6180822121011	6180822122011	6180822123011	6180822124011	6180822125011	618R480141666



Ø of plunger	A2	AF+1	ØB	ØBA	BG	E	EE	G	H	KF	KK	KV	KW	ØMM	PL	L2	L3+	L8	RT	SW	TG	VA-1	VD	WH
	d11	d11 min.												f8		0,5								
32	22	12	30	30	16	46,5	G 1/8	27,75	47,5	M6	M10x1,25	16	5	12	16	16,25	4,5	94±0,4	M6	10	32,5±0,5	4	5	26±1,4
40	24	13,5	35	35	16	53	G 1/4	33,25	53	M8	M12x1,25	18	6	16	20	18,25	4,5	105±0,7	M6	13	38±0,5	4	5	30±1,4
50	32	17	40	40	16	65	G 1/4	31	65	M10	M16x1,5	24	8	20	19	25	4,5	106±0,7	M8	17	46,5±0,6	4	5	37±1,4
63	32	17	45	45	16	75	G 3/8	38,25	75	M10	M16x1,5	24	8	20	24	25	4,5	121±0,8	M8	17	56,5±0,7	4	5	37±1,8
80	40	21	45	45	17	95	G 3/8	38,25	95	M12	M20x1,5	30	10	25	23,5	33	0	128±0,8	M10	22	72±0,7	4	5	46±1,8
100	40	21	55	55	17	115	G 1/2	42,25	115	M12	M16x1,5	30	10	25	25	36	0	138±1	M10	22	89±0,7	4	5	51±1,8
125	54	28	60	60	20	140	G 1/2	53,85	140	M16	M27x2	41	13,5	32	33	45	0	160±1	M12	27	110±1,1	6	7	65±2,2

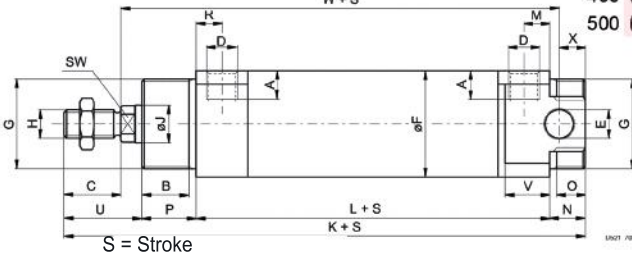
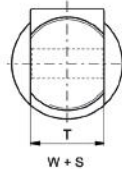


>>> **Cylinders**



**CPC round cylinder**

At www.rodavigo.net Family: Pneumatics  
Product: Mannesmann Mecman Cpoac Bosch Rexroth Pneumatics



Ø of plunger	A	B	C	D	ØEH8	ØF	G	H	ØJ	K	L	M	N	O	P	R	T0-0,2	U	V	W	X	SW
32	8	17	20	G 1/8	10	36	M30x1,5	M10	12	160	97	10,5	14	11	20	10,5	25	29	18	130	10	10
40	12	20	24	G 1/4	12	45	M38x1,5	M12	16	181	110	11	15	12	23	11	30	33	19	146	11	13
50	12	21	32	G 1/4	12	55	M45x1,5	M16x1,5	20	194	110	11	18	15	24	11	35	42	19	151	11	17
63	12	23,5	32	G 3/8	16	69	M45x1,5	M16x1,5	20	207	120,5	13	20	17	26,5	13	35	40	23	161	14	17
80	12	23	40	G 3/8	16	89	M55x1,5	M20x1,5	25	231	128	15	23	20	26	15	48	54	26	177	14	22

Piston Ø	32	40	50	63	80
Rod thread	M10	M12	M16x1,5	M16x1,5	M20x1,5
plunger	G 1/8	G 1/4	G 1/4	G 3/8	G 3/8
Holes	12	16	20	20	25
Piston rod Ø					

Race	25	50	80	100	125	160	200	250	320	400	500
6185217001000	6185217011000	6185217021000	6185217031000	6185217041000							
6185217001010	6185217011010	6185217021010	6185217031010	6185217041010							
6185217001090	6185217011070	6185217021060	6185217031060	6185217041070							
6185217001020	6185217011020	6185217021020	6185217031020	6185217041020							
6185217001070	6185217011190	6185217021070	6185217031150	6185217041080							
6185217001180	6185217011140	6185217021140	6185217031160	6185217041090							
6185217001040	6185217011040	6185217021040	6185217031040	6185217041040							
6185217001190	6185217011110	6185217021150	6185217031170	6185217041100							
6185217001200	6185217011200	6185217021160	6185217031180	6185217041110							
6185217001130	6185217011290	6185217021110	6185217031190	6185217041120							
6185217001310	6185217011300	6185217021310	6185217031300	6185217041300							

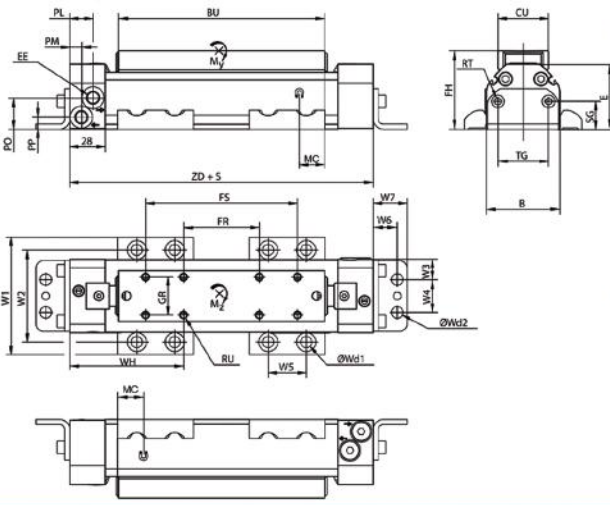
Ø of plunger	[mm]	32	40	50	63	80
Piston force during retraction	[N]	435	660	1035	1765	2855
Piston force during extraction	[N]	505	790	1235	1960	3165
Weight	0 mm of stroke [kg]	0,35	0,64	0,98	1,4	2,5
	+ 10 mm of stroke [kg]	0,015	0,025	0,036	0,042	0,06
Max stroke	[mm]	1500	1900	2000	2000	2000

**RTC-BV rodless cylinder**

Ø of plunger	16	25	32	40	50	63	80
Holes	M7	G 1/8	G 1/8	G 1/4	G 1/4	G 3/8	G 3/8
Stroke 100	618R480143252	618R480141454	-	-	-	-	-
200	618R480143255	618R480141455	618R480141462	-	-	-	-
300	618R480143256	618R480141456	618R480141463	-	-	-	-
400	618R480143257	618R480141457	618R480141464	618R480141472	618R480148854	618R480147730	618R480147731
500	618R480143258	618R480141458	618R480141465	618R480141473	618R480146166	618R480147713	618R480147714
600	618R480143259	618R480141459	618R480141466	618R480141474	618R480149081	618R480146014	618R480146210
700	618R480143260	618R480141460	618R480141468	618R480141475	618R480145947	618R480145948	618R480155522
800	-	618R480141461	618R480141469	618R480141476	618R480148600	618R480147223	618R480147699
900	-	-	618R480141470	618R480141477	618R480147023	618R480146204	618R480156948
1000	-	-	618R480141471	618R480141478	618R480149199	618R480147036	618R480147700



Piston Ø 16 - 80, Dimensions in mm



Ø of plunger	B	BU	CU	E	EE	FH	FR	FS	GR	MC	PL	PM	PO
16	34	118	26	36	M7	41	60	100	20	12	21,5	9	13,1
25	44	147	26	45,5	G 1/8	50,6	40	100	20	15	20	8	21,5
32	58	163	40	51,5	G 1/8	62,1	60	120	30	20	18,5	9,5	24,5
40	70	182	40	60,5	G 1/4	71,1	60	120	30	17	18	10	31,5
50	92	205	40	67,5	G 1/4	78,3	60	140	30	23	16	16	35,5
63	112	233	55	82,5	G 3/8	93,3	100	180	40	25	14	14	45,5
80	140	269	55	103,5	G 3/8	114,2	100	180	40	27	14	14	59,5
Ø of plunger	PP	RT1)	RU2)	SG	TG	W1	W2	W3	W4	W5	W6	W7	Wd1
16	7,5	M5	M4	17,3	19	63	45,5	8	18	30	13,5	19,8	M6
25	9,3	M5	M4	17,3	19	73	55,5	13	18	30	13,5	19,8	M6
32	9,5	M6	M6	22	40	93	72,5	16	26	30	19	26,8	M8
40	11	M6	M6	22	40	105	84,5	22	26	30	19	26,8	M8
50	12,5	M8	M6	22	40	140	114,5	11	70	40	22	32,7	M12
63	14,5	M8	M8	30	80	160	134,5	31	50	40	22	32,7	M12
80	16,5	M8	M8	30	80	188	162,5	45	50	40	22	32,7	M12

Ø of passage (mm): 3

Section (mm<sup>2</sup>): 7

RBE Quick Coupling Series

Standard IA IC HP y HPI W

Max service pressure (bar) 50 | 16 50 | 16 15 400 10<sup>3</sup> torr

Interlocking system

-for compressed air and gas with a force of 15 daN: 50 bar

-for liquid with a force of 15 daN: With max. 25 bar or without pressure



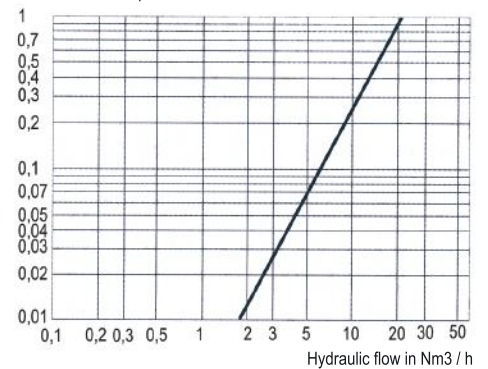
### Plugs

### Bulkhead fittings

Code	Type	Connection	Version <sup>1)</sup>	Code	Type	Connection	Version <sup>1)</sup>
166RBE031100	Female thread	G 1/8	S	166RBE032100	Female thread	G 1/8	S
166RBE031200		NPT 1/8	S	166RBE032200		NPT 1/8	S
166RBE031311		UN 7/16 - 20*	IA	166RBE032150		Male thread	G 1/8
166RBE031150	Male thread	G 1/8	S	166RBE032151	G 1/4		S
166RBE031151		G 1/4	S	166RBE032250	NPT 1/8		S
166RBE031250		NPT 1/8	S	166RBE032251	NPT 1/4	S	
166RBE031251	For rubber tube	NPT 1/4	S	166RBE032804	For rubber tube	Ø 4 mm	S
166RBE031804		Ø 4 mm	S	166RBE032806		Ø 6 mm	S
166RBE031806		Ø 6 mm	S	166RBE032904		For plastic tube	Ø 4/6 mm
166RBE031904	For plastic tube	Ø 4/6 mm	S	166RBE032906	Ø 6/8 mm		S
166RBE031908		Ø 6/8 mm	S	166RBE032704	For copper tube		Ø 4/6 mm
166RBE031704		For copper tube	Ø 4/6 mm	S		166RBE032706	Ø 6/8 mm
166RBE031706	Ø 6/8 mm		S	166RBE032766		For stainless tube	Ø 6 mm
166RBE031766	For stainless tube		Ø 6 mm	IA	166RBE032768		Ø 8 mm
166RBE031768		Ø 8 mm	IA	166RBE032753	Ø 1/4" ext		IA
166RBE031753		Ø 1/4" ext	IA				

1) Plugs available in Standard version (S), and medium and low pressure (IA and IC).

Pressure drop in bar



### Unvalved plugs

### Valved plugs

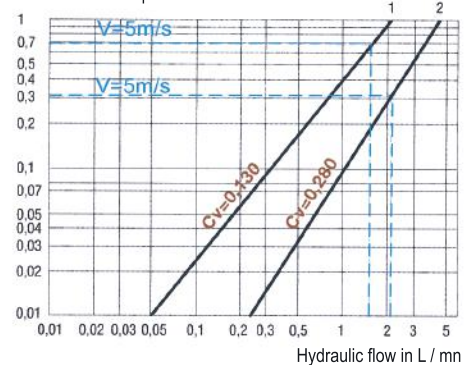
(delivered with protection cap in Nitrile NBR)

Code	Type	Connection	Version <sup>1)</sup>	Code	Type	Connection	Version <sup>1)</sup>
166RBE036100	Female thread	G 1/8	S	166RBE037100	Female thread	G 1/8	S
166RBE036200		NPT 1/8	S	166RBE037200		NPT 1/8	S
166RBE036150		G 1/8	S	166RBE037311		UN 7/16 - 20*	IA
166RBE036151	Male thread	G 1/4	S	166RBE037150	Male thread	G 1/8	S
166RBE036250		NPT 1/8	S	166RBE037151		G 1/4	S
166RBE036251		NPT 1/4	S	166RBE037250		NPT 1/8	S
166RBE036804	For rubber tube	Ø 4 mm	S	166RBE037251	For rubber tube	NPT 1/4	S
166RBE036806		Ø 6 mm	S	166RBE037804		Ø 4 mm	S
166RBE036904		For plastic tube	Ø 4/6 mm	S		166RBE037806	Ø 6 mm
166RBE036906	Ø 6/8 mm		S	166RBE037904	For plastic tube	Ø 4/6 mm	S
166RBE036704	For copper tube		Ø 4/6 mm	S		166RBE037906	Ø 6/8 mm
166RBE036706		Ø 6/8 mm	S	166RBE037704		For copper tube	Ø 4/6 mm
166RBE036766		For stainless tube	Ø 6 mm ext.	IC	166RBE037706		Ø 6/8 mm
166RBE036768	Ø 8 mm ext.		IC	166RBE037766	For stainless tube		Ø 6 mm ext.
166RBE036753	1/4" ext.		IC	166RBE037768		Ø 8 mm ext.	IA
			166RBE037753	1/4" ext.		IA	

1) Plugs available in Standard version (S), and medium and low pressure (IA and IC).

\* Compliance with SAE J 1926 standards.

Pressure drop in bar





>>> Quick couplings

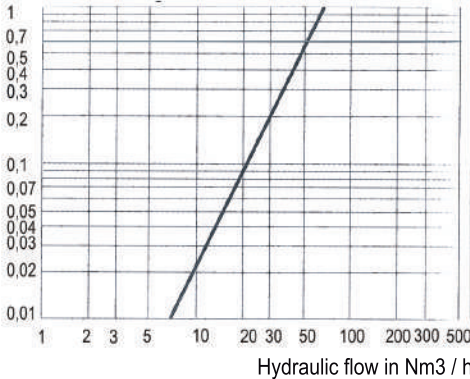


Modular quick couplings. RBE06

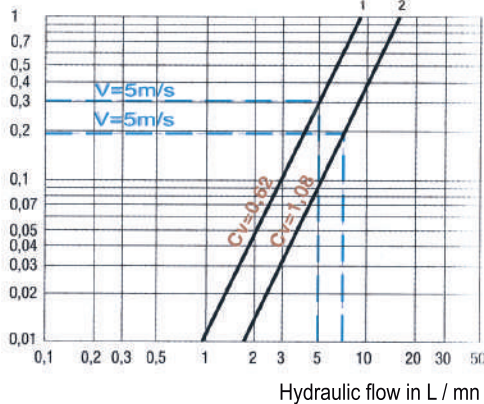
At www.rodavigo.net Family: Pneumatics  
Product: Staubli Material



Pressure drop in bar



Pressure drop in bar



Ø of passage (mm): 5,5  
Section (mm<sup>2</sup>): 23,75

RBE Quick Coupling Series  
Max service pressure (bar)  
Interlocking system

-for compressed air and gas with a force of 15 daN: 15 bar  
-for liquid with a force of 15 daN: With max. 10 bar or without pressure

Standard IA IC HP y HPI W  
50 | 16 50 | 16 15 450 10<sup>3</sup>torr

Plugs

Code	Type	Connection	Version <sup>1)</sup>	
166RBE061100	Female thread	G 1/8	S	
166RBE061101		G 1/4	S	
166RBE061102		G 3/8	S	
166RBE061103		G 1/2	S	
166RBE061200		NPT 1/8	S	
166RBE061201		NPT 1/4	S	
166RBE061202	NPT 3/8	S		
166RBE061314	Male thread	UN 9/16 - 18 <sup>1</sup>	IA	
166RBE061150		G 1/8	S	
166RBE061151		G 1/4	S	
166RBE061152		G 3/8	S	
166RBE061153		G 1/2	S	
166RBE061250		NPT 1/8	S	
166RBE061251		NPT 1/4	S	
166RBE061252		NPT 3/8	S	
166RBE061806		For rubber tube	Ø 6 mm	S
166RBE061808			Ø 8 mm	S
166RBE061810			Ø 10 mm	S
166RBE061813		Ø 13 mm	S	
166RBE061906	For plastic tube	Ø 6/8 mm	S	
166RBE061908		Ø 8/10 mm	S	
166RBE061706	For copper tube	Ø 6/8 mm	S	
166RBE061708		Ø 8/10 mm	S	
166RBE061766	For stainless tube	Ø 6 mm ext.	IA	
166RBE061768		Ø 8 mm ext.	IA	
166RBE061770		Ø 10 mm ext.	IA	
166RBE061753		Ø 1/4" ext.	IA	
166RBE061755		Ø 3/8" ext.	IA	

Bulkhead fittings

Code	Type	Connection	Version <sup>1)</sup>
166RBE062100	Female thread	G 1/8	S
166RBE062101		G 1/4	S
166RBE062102		G 3/8	S
166RBE062103	Male thread	G 1/2	S
166RBE062200		NPT 1/8	S
166RBE062201		NPT 1/4	S
166RBE062202		NPT 3/8	S
166RBE062314	For rubber tube	UN 9/16 - 18 <sup>1</sup>	IA
166RBE062150		G 1/8	S
166RBE062151	For plastic tube	G 1/4	S
166RBE062152		G 3/8	S
166RBE062153	For copper tube	G 1/2	S
166RBE062250		NPT 1/8	S
166RBE062251	For stainless tube	NPT 1/4	S
166RBE062252		NPT 3/8	S
166RBE062806		Ø 6 mm	S
166RBE062808		Ø 8 mm	S
166RBE062810		Ø 10 mm	S
166RBE062813	Ø 13 mm	S	
166RBE062906	For plastic tube	Ø 6/8 mm	S
166RBE062908		Ø 8/10 mm	S
166RBE062706	For copper tube	Ø 6/8 mm	S
166RBE062708		Ø 8/10 mm	S
166RBE062766	For stainless tube	Ø 6 mm ext.	IA
166RBE062768		Ø 8 mm ext.	IA
166RBE062770		Ø 10 mm ext.	IA
166RBE062753		Ø 1/4" ext.	IA
166RBE062755		Ø 3/8" ext.	IA

1) Plugs available in Standard (S) version, and medium and low pressure (IA and IC).

Unvalved plugs

Code	Type	Connection	Version <sup>1)</sup>	
166RBE066100	Female thread	G 1/8	S	
166RBE066101		G 1/4	S	
166RBE066102		G 3/8	S	
166RBE066200		NPT 1/8	S	
166RBE066201		NPT 1/4	S	
166RBE066202		NPT 3/8	S	
166RBE066314	Male thread	M 14 x 125	S	
166RBE066315		UN 9/16 - 20	S	
166RBE066150		G 1/8	S	
166RBE066151		G 1/4	S	
166RBE066152		G 3/8	S	
166RBE066250		NPT 1/8	S	
166RBE066251		NPT 1/4	S	
166RBE066252		NPT 3/8	S	
166RBE066414		For rubber tube	M 14 x 125	S
166RBE066415			UN 9/16 - 20	S
166RBE066152NW		For plastic tube	W 3/8 (With.)	S
166RBE066804			Ø 4 mm	S
166RBE066806	Ø 6 mm		S	
166RBE066808	Ø 8 mm		S	
166RBE066810	For copper tube	Ø 10 mm	S	
166RBE066813		Ø 13 mm	S	
166RBE066904		Ø 4/6 mm	S	
166RBE066906	For plastic tube	Ø 6/8 mm	S	
166RBE066908		Ø 8/10 mm	S	
166RBE066706	For copper tube	Ø 6/8 mm	S	
166RBE066708		Ø 8/10 mm	S	

Valved plugs

(delivered with protection cap in Nitrile NBR)

Code	Type	Connection	Version <sup>1)</sup>
166RBE067100	Female thread	G 1/8	S
166RBE067101		G 1/4	S
166RBE067102		G 3/8	S
166RBE067200	Male thread	NPT 1/8	S
166RBE067201		NPT 1/4	S
166RBE067202		NPT 3/8	S
166RBE067314		UN 9/16 - 20	IA
166RBE067150	For rubber tube	G 1/8	S
166RBE067151		G 1/4	S
166RBE067152	For plastic tube	G 3/8	S
166RBE067250		NPT 1/8	S
166RBE067251	For copper tube	NPT 1/4	S
166RBE067252		NPT 3/8	S
166RBE067806	For stainless tube	Ø 6 mm	S
166RBE067808		Ø 8 mm	S
166RBE067810		Ø 10 mm	S
166RBE067813	For plastic tube	Ø 13 mm	S
166RBE067906		Ø 6/8 mm	S
166RBE067908	For copper tube	Ø 8/10 mm	S
166RBE067706		Ø 6/8 mm	S
166RBE067708	Ø 8/10 mm	S	

1) Plugs available in Standard (S) version, and medium and low pressure (IA and IC).

<sup>1</sup>Compliance with SAE J 1926 standards.

<sup>2</sup>S = Standard. IA or IC = not Standard, but manufacturing of medium or low pressure.

### Plugs

Code	Type	Connection	Version <sup>1)</sup>
166RBE081101	Female thread	G 1/4	S
166RBE081102		G 3/8	S
166RBE081103		G 1/2	S
166RBE081201		NPT 1/4	S
166RBE081202		NPT 3/8	S
166RBE081203		NPT 1/2	S
166RBE081319	UN 3/4 - 18*	IA	
166RBE081151	Male thread	G 1/4	S
166RBE081152		G 3/8	S
166RBE081153		G 1/2	S
166RBE081251	NPT 1/4	S	
166RBE081252	NPT 3/8	S	
166RBE081253	NPT 1/2	S	
166RBE081808	For rubber tube	Ø 8 mm	S
166RBE081810		Ø 10 mm	S
166RBE081813		Ø 13 mm	S
166RBE081816		Ø 16 mm	S
166RBE081908	For plastic tube	Ø 8/10 mm	S
166RBE081910		Ø 10/12 mm	S
166RBE081708	For copper tube	Ø 8/10 mm	S
166RBE081710		Ø 10/12 mm	S
166RBE081770	For stainless tube	Ø 10 mm ext.	IA
166RBE081772		Ø 12 mm ext.	IA
166RBE081755		Ø 3/8" ext.	IA
166RBE081756		Ø 1/2" ext.	IA

### Bulkhead fittings

Code	Type	Connection	Version <sup>1)</sup>
166RBE082101	Female thread	G 1/4	S
166RBE082102		G 3/8	S
166RBE082103		G 1/2	S
166RBE082201		NPT 1/4	S
166RBE082202		NPT 3/8	S
166RBE082203		NPT 1/2	S
166RBE082319	UN 3/4 - 18*	IA	
166RBE082151	Male thread	G 1/4	S
166RBE082152		G 3/8	S
166RBE082153		G 1/2	S
166RBE082251	NPT 1/4	S	
166RBE082252	NPT 3/8	S	
166RBE082253	NPT 1/2	S	
166RBE082808	For rubber tube	Ø 8 mm	S
166RBE082810		Ø 10 mm	S
166RBE082813		Ø 13 mm	S
166RBE082816		Ø 16 mm	S
166RBE082908	For plastic tube	Ø 8/10 mm	S
166RBE082910		Ø 10/12 mm	S
166RBE082708	For copper tube	Ø 8/10 mm	S
166RBE082710		Ø 10/12 mm	S
166RBE082770	For stainless tube	Ø 10 mm ext.	IA
166RBE082772		Ø 12 mm ext.	IA
166RBE082755		Ø 3/8" ext.	IA
166RBE082756		Ø 1/2" ext.	IA



1) Plugs available in Standard version (S), and medium and low pressure (IA and IC).

### Unvalved plugs

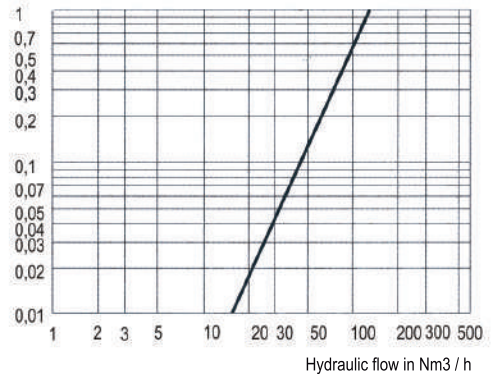
Code	Type	Connection	Version <sup>1)</sup>
166RBE086101	Female thread	G 1/4	S
166RBE086102		G 3/8	S
166RBE086103		G 1/2	S
166RBE086201		NPT 1/4	S
166RBE086202		NPT 3/8	S
166RBE086203		NPT 1/2	S
166RBE086151	Male thread	G 1/4	S
166RBE086152		G 3/8	S
166RBE086153		G 1/2	S
166RBE086251	NPT 1/4	S	
166RBE086252	NPT 3/8	S	
166RBE086253	NPT 1/2	S	
166RBE086806	For rubber tube	Ø 6 mm	S
166RBE086808		Ø 8 mm	S
166RBE086810		Ø 10 mm	S
166RBE086813		Ø 13 mm	S
166RBE086816	Ø 16 mm	S	
166RBE086908	For plastic tube	Ø 8/10 mm	S
166RBE086910		Ø 10/12 mm	S
166RBE086708	For copper tube	Ø 8/10 mm	S
166RBE086710		Ø 10/12 mm	S

### Valved plugs

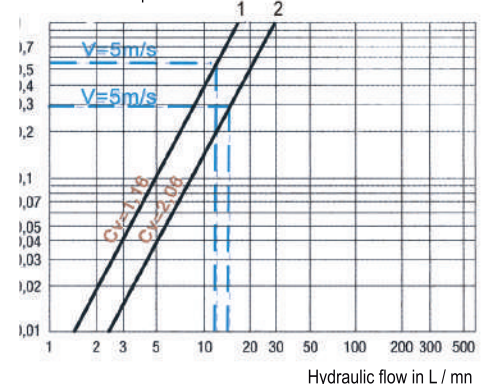
(delivered with protection cap in Nitrile NBR)

Code	Type	Connection	Version <sup>1)</sup>
166RBE087101	Female thread	G 1/4	S
166RBE087102		G 3/8	S
166RBE087103		G 1/2	S
166RBE087201		NPT 1/4	S
166RBE087202		NPT 3/8	S
166RBE087203		NPT 1/2	S
166RBE087151	Male thread	UN 3/4 - 16*	IA
166RBE087152		G 1/4	S
166RBE087153		G 3/8	S
166RBE087251	NPT 1/4	S	
166RBE087252	NPT 3/8	S	
166RBE087253	NPT 1/2	S	
166RBE087806	For rubber tube	Ø 6 mm	S
166RBE087808		Ø 8 mm	S
166RBE087810		Ø 10 mm	S
166RBE087813		Ø 13 mm	S
166RBE087816	Ø 16 mm	S	
166RBE087908	For plastic tube	Ø 8/10 mm	S
166RBE087910		Ø 10/12 mm	S
166RBE087708	For copper tube	Ø 8/10 mm	S
166RBE087710		Ø 10/12 mm	S

Pressure drop in bar



Pressure drop in bar



<sup>1)</sup> Compliance with SAE J 1926 standards.

<sup>2)</sup> S = Standard. IA or IC = not Standard, but manufacturing of medium or low pressure.

1) Plugs available in Standard (S) version, and medium and low pressure (IA and IC).

Ø of passage (mm): 8

Section (mm<sup>2</sup>): 50

RBE Quick Coupling Series

Max service pressure (bar)

Interlocking system

-for compressed air and gas with a force of 15 daN: 10 bar

-for liquid with a force of 15 daN: With max. 7 bar or without pressure



## >>> Quick couplings



### Modular quick couplings. RBE 11

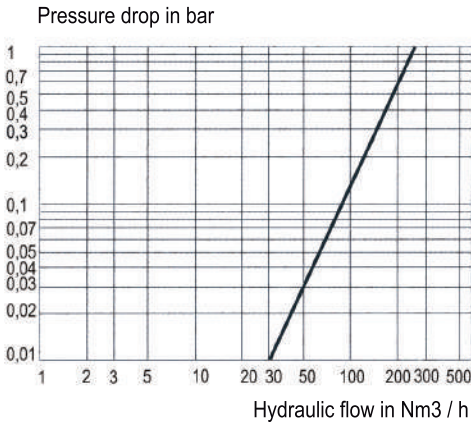
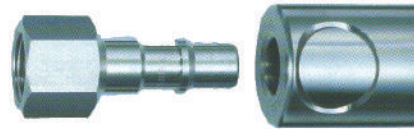
At www.rodavigo.net Family: Pneumatics  
Product: Staubli Material

Ø of passage (mm): 11  
Section (mm<sup>2</sup>): 95

RBE Quick Coupling Series  
Max service pressure (bar)  
Interlocking system

Standard	IA	IC	HP y HPI	W
50	16	50	16 15	350 10 <sup>3</sup> torr

-for compressed air and gas with a force of 15 daN: 8 bar  
-for liquid with a force of 15 daN: With max. 3 bar or without pressure



#### Plugs

Code	Type	Connection	Version <sup>1)</sup>
166RBE111102	Female thread	G 3/8	S
166RBE111103		G 1/2	S
166RBE111104		G 3/4	S
166RBE111202		NPT 3/8	S
166RBE111203		NPT 1/2	S
166RBE111204		NPT 3/4	S
166RBE111322	UN 7/8 - 14*	IA	
166RBE111152	Male thread	G 3/8	S
166RBE111153		G 1/2	S
166RBE111154		G 3/4	S
166RBE111252		NPT 3/8	S
166RBE111253	NPT 1/2	S	
166RBE111254	NPT 3/4	S	
166RBE111808	For rubber tube	Ø 8 mm	S
166RBE111810		Ø 10 mm	S
166RBE111813		Ø 13 mm	S
166RBE111816		Ø 16 mm	S
166RBE111819		Ø 19 mm	S

#### Bulkhead fittings

Code	Type	Connection	Version <sup>1)</sup>
166RBE112102	Female thread	G 3/8	S
166RBE112103		G 1/2	S
166RBE112104		G 3/4	S
166RBE112202	NPT 3/8	NPT 3/8	S
166RBE112203		NPT 1/2	S
166RBE112204		NPT 3/4	S
166RBE112322	UN 7/8 - 14*	IA	
166RBE112152	Male thread	G 3/8	S
166RBE112153		G 1/2	S
166RBE112154		G 3/4	S
166RBE112252		NPT 3/8	S
166RBE112253	NPT 1/2	S	
166RBE112254	NPT 3/4	S	
166RBE112808	For rubber tube	Ø 8 mm	S
166RBE112810		Ø 10 mm	S
166RBE112813		Ø 13 mm	S
166RBE112816		Ø 16 mm	S
166RBE112819		Ø 19 mm	S

1) Plugs available in Standard (S) version, and medium and low pressure (IA and IC).

#### Unvalved plugs

Code	Type	Connection	Version <sup>1)</sup>
166RBE116101	Female thread	G 1/4	S
166RBE116102		G 3/8	S
166RBE116103		G 1/2	S
166RBE116104		G 3/4	S
166RBE116202		NPT 3/8	S
166RBE116203	NPT 1/2	S	
166RBE116204	NPT 3/4	S	
166RBE116152	Male thread	G 3/8	S
166RBE116153		G 1/2	S
166RBE116154		G 3/4	S
166RBE116252		NPT 3/8	S
166RBE116253		NPT 1/2	S
166RBE116254	NPT 3/4	S	
166RBE116806	For rubber tube	Ø 6 mm	S
166RBE116808		Ø 8 mm	S
166RBE116810		Ø 10 mm	S
166RBE116813		Ø 13 mm	S
166RBE116816		Ø 16 mm	S
166RBE116819		Ø 19 mm	S

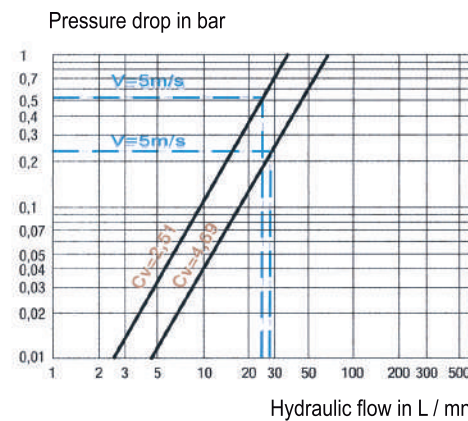
#### Valved plugs

(delivered with protection cap in Nitrile NBR)

Code	Type	Connection	Version <sup>1)</sup>
166RBE117102	Female thread	G 3/8	S
166RBE117103		G 1/2	S
166RBE117104		G 3/4	S
166RBE117202	NPT 3/8	NPT 3/8	S
166RBE117203		NPT 1/2	S
166RBE117204		NPT 3/4	S
166RBE117322	UN 7/8 - 14*	IA	
166RBE117152	Male thread	G 3/8	S
166RBE117153		G 1/2	S
166RBE117154		G 3/4	S
166RBE117252		NPT 3/8	S
166RBE117253	NPT 1/2	S	
166RBE117254	NPT 3/4	S	
166RBE117813	For rubber tube	Ø 13 mm	S
166RBE117816		Ø 16 mm	S
166RBE117819		Ø 19mm	S

1) Plugs available in Standard (S) version, and medium and low pressure (IA and IC).

\* Compliance with SAE J 1926 standards.



## >>> Automatic quick couplings



C 9000 automatic safety couplings. ISO B6 series. Flow: 1250NI / min. Passage 5.5 mm.

At www.rodavigo.net Family: Pneumatics  
Product: Legris pneumatic fittings

#### SECURITY



CEJN 310  
Rectus 23-24  
US MIL.C4109



#### 9401U male body, cylindrical BSP

Code	C	weight
2059401U0613	G1/4	0,075
2059401U0617	G3/8	0,095
2059401U0621	G1/2	0,115



#### 9087U male coupling, cylindrical BSP

Code	C	weight
2059087U0613	G1/4	0,023
2059087U0617	G3/8	0,032
2059087U0621	G1/2	0,039



## >>> Automatic quick couplings

At [www.rodavigo.net](http://www.rodavigo.net) Family: Pneumatics  
Product: Legris pneumatic fittings

C 9000 automatic safety couplings. ISO B6 series.  
Flow: 1250NI / min. Passage 5.5 mm.

### 9405U male body, conical BSP



Code	C	weight
2059405U0613	R1/4	0,075
2059405U0617	R3/8	0,095
2059405U0621	R1/2	0,110

### 9086 female coupling, cylindrical BSP



Code	C	weight
20590862313	G1/4	0,025
20590862317	G3/8	0,025
20590862321	G1/2	0,038

### 9414U female body, cylindrical BSP



Code	C	weight
2059414U0613	G1/4	0,070
2059414U0617	G3/8	0,085
2059414U0621	G1/2	0,115

### 99080U coupling with LF 3000 output, with protection spring



Code	∅D	weight
2059080U0608	8	0,052
2059080U0610	10	0,044

### 9410U body with LF 3000 outlet, with protection spring



Code	∅D	weight
2059410U0608	8	0,096
2059410U0610	10	0,080

### 9094U coupling with ribbed tailpiece



Code	∅D	weight
2059094U0606	6	0,015
2059094U0608	8	0,017
2059094U0610	10	0,025

### 9410U body with ribbed tailpiece



Code	∅D	weight
2059421U0606	6	0,070
2059421U0608	8	0,070
2059421U0610	10	0,070

### 9416U female body, bulkhead, cylindrical BSP



Code	C	weight
2059416U0613	G1/4	0,105

### 9440U Y-body, female, cylindrical BSP



Code	C	weight
2059440U0617	G3/8	0,207

Flow rate-head loss curves  
Max service pressure 16 bar

C 9000 automatic safety couplings. ISO B8 series. Flow: 2400NI / min. Passage: 8 mm.

### SECURITY



CEJN 430  
Rectus 30  
US MIL.C4109



### 9401U male body, cylindrical BSP



Code	C	weight
2059401U0813	G1/4	0,120
2059401U0817	G3/8	0,133
2059401U0821	G1/2	0,140

### 9087U male coupling, cylindrical BSP



Code	C	weight
2059087U0813	G1/4	0,030
2059087U0817	G3/8	0,039
2059087U0821	G1/2	0,047

### 9405U male body, conical BSP



Code	C	weight
2059405U0813	R1/4	0,120
2059405U0817	R3/8	0,120
2059405U0821	R1/2	0,140

### 9086 female coupler, cylindrical BSP



Code	C	weight
20590863013	G1/4	0,028
20590863017	G3/8	0,028
20590863021	G1/2	0,041



## >>> Automatic quick couplings

C 9000 automatic safety couplings. ISO B8 series.  
Flow: 2400NI / min. Passage: 8 mm.

At www.rodavigo.net Family: Pneumatics  
Product: Legris pneumatic fittings

### 9414U female body, cylindrical BSP



Code	C	weight
2059414U0813	G1/4	0,127
2059414U0817	G3/8	0,144
2059414U0821	G1/2	0,138

### 9410U body with LF 3000 outlet, with protection spring



Code	ØD	weight
2059410U0810	10	0,175
2059410U0812	12	0,162

### 9421U corrugated shank body



Code	ØD	weight
2059421U0808	8	0,100
2059421U0810	10	0,124
2059421U0813	13	0,125

### 9416U female body, bulkhead, cylindrical BSP



Code	C	weight
2059416U0817	G3/8	0,150

Flow rate-head loss curves  
Max service pressure 16 bar

### 9080U coupling with LF 3000 output, with protection spring



Code	ØD	weight
2059080U0810	10	0,095
2059080U0812	12	0,096

### 9094U coupling with ribbed tailpiece



Code	ØD	weight
2059094U0808	8	0,037
2059094U0810	10	0,038
2059094U0813	13	0,042

### 9440U Y-body, female, cylindrical BSP



Code	C	weight
2059440U0821	G1/2	0,352

C 9000 automatic safety couplings. Europe Series. Flow: 2000NI / min. Passage: 7.2mm.

### SECURITY



CEJN 320  
Rectus 25-26



### 9401E male body, cylindrical BSP



Code	C	weight
2059401E0713	G1/4	0,124
2059401E0717	G3/8	0,122
2059401E0721	G1/2	0,136

### 9414E female body, cylindrical BSP



Code	C	weight
2059414E0713	G1/4	0,118
2059414E0717	G3/8	0,109
2059414E0721	G1/2	0,130

### 9410E body with LF 3000 output, with protection spring



Code	ØD	weight
2059410E0710	10	0,175
2059410E0712	12	0,180

### 9421U body with ribbed tailpiece



Code	ØD	weight
2059421E0708	8	0,000
2059421E0710	10	0,114
2059421E0713	13	0,119

### 9087E male coupling, cylindrical BSP



Code	C	weight
2059087E0713	G1/4	0,020
2059087E0717	G3/8	0,026
2059087E0721	G1/2	0,036

### 9086 female coupling, cylindrical BSP



Code	C	weight
20590862513	G1/4	0,023
20590862517	G3/8	0,024
20590862521	G1/2	0,034

### 9080E coupling with LF 3000 output, with protection spring



Code	ØD	weight
2059080E0710	10	0,102
2059080E0712	12	0,088

### 9094E coupling with ribbed tailpiece



Code	ØD	weight
2059094E0708	8	0,027
2059094E0710	10	0,032
2059094E0713	13	0,031



## >>> Automatic quick couplings

At [www.rodavigo.net](http://www.rodavigo.net)

Family: Pneumatics  
Product: Legris pneumatic fittings

C 9000 automatic safety couplings, Europe Series.  
Flow: 2000NI / min. Passage 7.2 mm.

### 9416E female body, bulkhead, cylindrical BSP



Code	C	weight
2059416E0717	G3/8	0,153

Flow rate-head loss curves  
Max service pressure 16 bar

### 9440E Y-body, female, cylindrical BSP



Code	C	weight
2059440E0721	G1/2	0,335

## C 9000 automatic safety couplings, ARO Series Flow: 1250NI / min. Passage 5.5 mm.

### SECURITY



ARO 210  
CEJN 300  
Orion 44510  
Parker 50  
Rectus 14-22



Flow rate-head loss curves  
Service pressure maxi 16 bar

### 9401A male body, cylindrical BSP



Code	C	weight
2059401A0613	G1/4	0,103
2059401A0617	G3/8	0,123
2059401A0621	G1/2	0,133

### 9087A male coupling, cylindrical BSP



Code	C	weight
2059087A0613	G1/4	0,023
2059087A0617	G3/8	0,032
2059087A0621	G1/2	0,039

### 9405A male body, conical BSP



Code	C	weight
2059405A0613	R1/4	0,103
2059405A0617	R3/8	0,123
2059405A0621	R1/2	0,128

### 9084 male coupling, conical BSP



Code	C	weight
20590842213	R1/4	0,022
20590842217	R3/8	0,027
20590842221	R1/2	0,052

### 9414A female body, cylindrical BSP



Code	C	weight
2059414A0613	G1/4	0,098
2059414A0617	G3/8	0,113
2059414A0621	G1/2	0,133

### 9086 female coupling, cylindrical BSP



Code	C	weight
20590862213	G1/4	0,025
20590862217	G3/8	0,025
20590862221	G1/2	0,038

### 9410A body with LF 3000 outlet, with protection spring



Code	ØD	weight
2059410A0608	8	0,124
2059410A0610	10	0,108

### 9080A coupling with LF 3000 output, with protection spring



Code	ØD	weight
2059080A0608	8	0,052
2059080A0610	10	0,044

### 9421A body with ribbed tailpiece



Code	ØD	weight
2059421A0606	6	0,098
2059421A0608	8	0,098
2059421A0610	10	0,098

### 9094A coupling with ribbed tailpiece



Code	ØD	weight
2059094A0606	6	0,015
2059094A0608	8	0,017
2059094A0610	10	0,025

### 9416A female body, bulkhead, cylindrical BSP



Code	C	weight
2059416A0613	G1/4	0,123

### 9440A Y-body, female, cylindrical BSP



Code	C	weight
2059440A0617	G3/8	0,263

## >>> Safety quick couplings



C 9000 automatic safety couplings.

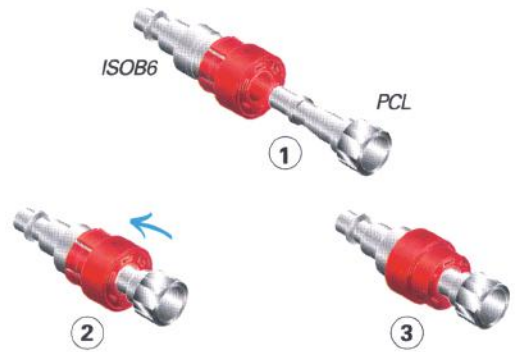
At www.rodavigo.net Family: Pneumatics  
Product: Legris pneumatic fittings

### Adapters / Couplers

In the renovation of a circuit, or in the maintenance of an equipment, the interchangeability of the quick couplings constitutes an important criterion of choice for the user.

In the case of couplings with national standards, the C 9000 has provided a complementary solution: the adapter / coupling.

This piece allows adapting the PCL and ISO C6 profiles to the ISO B6 standard and solving so any compatibility problem.



9490U adapter / coupling ISO C6 to ISO B6



Code	weight
2059090U0601	0,040

9090U adapter / coupling PCL to ISO B6



Code	weight
2059090U0603	0,035

The C9000 automatic safety couplings are perfectly adapted to the technical tubes in this catalog that you can find in the chapter and technical tubes.

- Calibrated flexible polyurethane tube connected to models with protection spring.
- Spiral polyurethane tubes.
- Bridged PVC tubes.

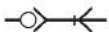


## >>> Metallic quick couplings



Metallic quick couplings. 13 series. Flow: 1150 NI / min. Passage 7.5 mm.

### Simple shutter



CEJN 314  
Nitto Kohki 200  
Rectus 03



The 13 series plugs are equipped with a needle suspension system..A sealing gasket ensures protection of the mechanism against dust: its shape, prevents any introduction of impurities. With a **reduced weight** and presenting excellent performance of flow, are perfectly adapted to any pneumatic installation.

### 9105 male body, conical BSP

Code	C	weight
20591051313	R1/4	0,085
20591051317	R3/8	0,089
20591051321	R1/2	0,108

simple shutter

### 9084 male coupling, conical BSP

Code	C	weight
20590841313	R1/4	0,030
20590841317	R3/8	0,100
20590841321	R1/2	0,051

### 9114 male body, cylindrical BSP

Code	C	weight
20591141313	G1/4	0,098
20591141317	G3/8	0,100
20591141321	G1/2	0,108

simple shutter

### 9086 male body, cylindrical BSP

Code	C	weight
20590861313	G1/4	0,025
20590861317	G3/8	0,024
20590861321	G1/2	0,036

### 9123 body with ribbed tailpiece

Code	∅D	weight
20591231308	8	0,084
20591231310	10	0,084
20591231313	13	0,089

### 9085 coupling with ribbed tailpiece

Code	∅D	weight
20590851308	8	0,019
20590851310	10	0,022
20590851313	13	0,025

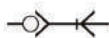
## >>> Metallic quick couplings

At [www.rodavigo.net](http://www.rodavigo.net)

Family: Pneumatics  
Product: Legris pneumatic fittings

Metallic quick couplings. 14 series. Flow: 700 NI / min. Passage 5 mm.

### Simple shutter



Aro 210  
CEJN 300  
Orion 44510  
Parker 50  
Rectus 14.22



Equipped with a needle closing system, the 14 series quick couplings are a very interesting economic solution. Its interchangeability with the 22 series, with a single type of coupling for both series, increase its advantages. Robust construction, they are suitable for any type of tooling or installation that works with compressed air.



#### 9101 body with male thread, cylindrical BSP

Code	C	weight
20591011413	G1/4	0,083
20591011417	G3/8	0,086
20591011421	G1/2	0,096

simple shutter



#### 9084 coupling with male thread, conical BSP

Code	C	weight
20590842213	R1/4	0,022
20590842217	R3/8	0,027
20590842221	R1/2	0,052



#### 9114 body with female thread, cylindrical BSP

Code	C	weight
20591141413	G1/4	0,099
20591141417	G3/8	0,095
20591141421	G1/2	0,102

simple shutter



#### 9086 coupler with female thread, cylindrical BSP

Code	C	weight
20590862213	G1/4	0,026
20590862217	G3/8	0,025
20590862221	G1/2	0,035



#### 9123 body with ribbed tailpiece

Code	ØD	weight
20591231406	6	0,085
20591231408	8	0,086
20591231409	9	0,086
20591231410	10	0,088
20591231413	13	0,090

simple shutter



#### 9085 grooved spigot coupler

Code	ØD	weight
20590852206	6	0,014
20590852208	8	0,016
20590852209	9	0,015
20590852210	10	0,018
20590852213	13	0,023

Metallic quick couplings. 17 series.. Flow: 870 NI / min. Passage 5 mm.

### Simple shutter



CEJN 317  
Rectus 17  
Schrader NW5



Equipped with an Ultra-Flo valve, the 17 series couplings adapt to any use that requires excellent flow performance as well as low pressure drops. Compact, light and easy to handle, they adapt to a large number of industrial applications.



#### 9105 male body, conical BSP

Code	C	weight
20591051713	R1/4	0,112
20591051717	R3/8	0,111
20591051721	R1/2	0,116

simple shutter



#### 9084 coupling with male thread, conical BSP

Code	C	weight
20590841710	R1/8	0,016
20590841713	R1/4	0,020
20590841717	R3/8	0,026
20590841721	R1/2	0,027

without shutter



#### 9114 body with female thread, cylindrical BSP

Code	C	weight
20591141713	G1/4	0,096
20591141717	G3/8	0,100
20591141721	G1/2	0,135

simple shutter



#### 9086 coupling with female thread, cylindrical BSP

Code	C	weight
20590861710	G1/8	0,016
20590861713	G1/4	0,025
20590861717	G3/8	0,027
20590861721	G1/2	0,030

without shutter



#### 9123 body with ribbed tailpiece

Code	ØD	weight
20591231706	6	0,100
20591231708	8	0,100
20591231710	10	0,110



#### 9085 coupling with ribbed tailpiece

Code	ØD	weight
20590851706	6	0,015
20590851708	8	0,016
20590851710	10	0,018

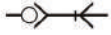
**>>> Metallic quick couplings**



Metallic quick couplings. 18 series. Flow: 950 NI / min. Passage 5.5 mm.

At www.rodavigo.net Family: Pneumatics  
Product: Legris pneumatic fittings

**Simple shutter**



ISO 6150 C  
AFNOR:  
NF.E49.053  
CEJN 291  
Rectus 18  
Staubli RCS-RBE



The **ultra-flo** technology of the 18 series couplings allow for a high flow rate, with a low pressure drop. This great capacity, makes them adapt perfectly to a wide variety of facilities and tools

- Small pneumatic tools
- Pneumatic automation
- Blow guns ...

**9101 body with male thread, cylindrical BSP**



Code	C	weight
20591011813	G1/4	0,106
20591011817	G3/8	0,106

simple shutter

**9087 coupling with male thread, cylindrical BSP**



Code	C	weight
20590871813	G1/4	0,019
20590871817	G3/8	0,025

without shutter

**9114 body with female thread, cylindrical BSP**



Code	C	weight
20591141813	G1/4	0,108
20591141817	G3/8	0,101

simple shutter

**9086 coupling with female thread, cylindrical BSP**



Code	C	weight
20590861813	G1/4	0,022
20590861817	G3/8	0,015

without shutter

**9123 body with ribbed tailpiece**



Code	ØD	weight
20591231806	6	0,104
20591231808	8	0,106
20591231810	10	0,107

simple shutter

**9085 coupling with ribbed tailpiece**

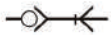


Code	ØD	weight
20590851806	6	0,015
20590851808	8	0,012
20590851810	10	0,017

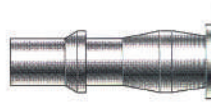
without shutter

Metallic quick couplings. 19 series. Flow: 660 NI / min. Passage 5.5 mm.

**Simple shutter**



CEJN 295  
PCL 60  
Rectus 19



Equipped with an Ultra-Flo valve, the 19 series couplings adapt to any use that requires excellent flow performance as well as low pressure drops.

Compact, light and easy to handle, they adapt to a large number industrial applications.

**9105 male body, conical BSP**



Code	C	weight
20591051913	R1/4	0,101
20591051917	R3/8	0,106
20591051921	R1/2	0,116

simple shutter

**9084 coupling with male thread, conical BSP**



Code	C	weight
20590841913	R1/4	0,022
20590841917	R3/8	0,039
20590841921	R1/2	0,043

without shutter

**9114 body with female thread, cylindrical BSP**



Code	C	weight
20591141913	G1/4	0,103
20591141917	G3/8	0,096
20591141921	G1/2	0,130

simple shutter

**9086 coupling with female thread, cylindrical BSP**



Code	C	weight
20590861913	G1/4	0,025
20590861917	G3/8	0,027
20590861921	G1/2	0,032

without shutter

**9123 body with ribbed tailpiece**



Code	ØD	weight
20591231906	6	0,100
20591231908	8	0,104
20591231910	10	0,101

simple shutter

**9085 coupling with ribbed tailpiece**



Code	ØD	weight
20590851906	6	0,016
20590851908	8	0,019
20590851910	10	0,020

without shutter

## >>> Metallic quick couplings

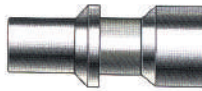
At [www.rodavigo.net](http://www.rodavigo.net) Family: Pneumatics  
Product: Legris pneumatic fittings

Metallic quick couplings. 20 series. Flow: 165 NI / min. Passage 2.7 mm.

### Double and Single shutter



ISO 6150 C  
AFNOR:  
NF.E49.053  
CEJN 291  
Rectus 18



Being the smallest in the range, these miniature couplings respond perfectly to the demands imposed by **small spaces**. Its optimal flow in relation to its small dimensions, easy handling and its wide variety of couplings make them specific adapted to the following fields of applications:

- Medical and dental industries - Instrumentation, control - Laboratories.

### 9201 body with male thread, cylindrical BSP

Code	C	weight
20592012019	M5x0,8	0,009
20592012010	G1/8	0,012

double shutter



### 9286-9086 coupling with female thread, cylindrical BSP

Code	C	weight
20592862019	M5x0,8	0,008
20592862010	G1/8	0,011

with shutter



### 9214 body with female thread, cylindrical BSP

Code	C	weight
20592142019	M5x0,8	0,010
20592142010	G1/8	0,014

double shutter



Code	C	weight
20590862019	M5x0,8	0,003
20590862010	G1/8	0,004

without shutter



### 9226 body with ribbed tailpiece, bulkhead

Code	∅D	weight
20592262003	3	0,016
20592262004	4	0,017

double shutter



### 9285-9085 coupling with ribbed tailpiece

Code	∅D	weight
20592852003	3	0,007
20592852004	4	0,007
20592852005	5	0,007

with shutter



### 9287-9087 coupling with male thread, cylindrical BSP

Code	C	weight
20592872019	M5x0,8	0,006
20592872010	G1/8	0,010

with shutter



Code	∅D	weight
20590852003	3	0,002
20590852004	4	0,002
20590852005	5	0,003

without shutter



### 9287-9087 coupling with male thread, cylindrical BSP

Code	C	weight
20590872019	M5x0,8	0,006
20590872010	G1/8	0,010

without shutter



### 9095 coupling with ribbed tailpiece, bulkhead

Code	∅D	weight
20590952003	3	0,012
20590952004	4	0,012

without shutter



Metallic quick couplings. 21 series. Flow: 530 NI / min. Passage 5 mm.

### Double and Single shutter



Rectus 21



Small in size, the **21 series** quick couplings guarantee the user a **large high flow**.

The great variety of couplings that are proposed allows the use of these quick couplings in various areas where **space is limited**.

Let's quote for example:

- Equipment for small pneumatic tools
- Apparatus for control, measurement, regulation
- Pneumatic automation

### 9201 body with male thread, cylindrical BSP

Code	C	weight
20592012110	G1/8	0,027
20592012113	G1/4	0,035

double shutter



### 9287-9087 coupling with male thread, cylindrical BSP

Code	C	weight
20592872110	G1/8	0,023
20592872113	G1/4	0,031

with shutter



Code	C	weight
20590872110	G1/8	0,011
20590872113	G1/4	0,019

without shutter





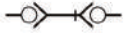
>>> **Metallic quick couplings**



Metallic quick couplings. 21 series. Flow: 530 NI / min. Passage 5mm.

At www.rodavigo.net Family: Pneumatics  
Product: Legris pneumatic fittings

**Double and Single shutter**



**9214 body with female thread, cylindrical BSP**



Code	C	weight
20592142110	G1/8	0,029
20592142113	G1/4	0,040

double shutter

**9223 body with ribbed tailpiece**



Code	∅D	weight
20592232104	4	0,026
20592232106	6	0,027
20592232108	8	0,028

double shutter

**9226 body with ribbed tailpiece, bulkhead**



Code	∅D	weight
20592262104	4	0,033
20592262106	6	0,047
20592262108	8	0,046

double shutter

**9286-9086 coupling with female thread, cylindrical BSP**



Code	C	weight
20592862110	G1/8	0,025
20592862113	G1/4	0,035

with shutter

Code	C	weight
20590862110	G1/8	0,014
20590862113	G1/4	0,017

without shutter

**9285-9085 coupling with ribbed tailpiece**



Code	∅D	weight
20592852104	4	0,022
20592852106	6	0,023
20592852108	8	0,023

with shutter

Code	∅D	weight
20590852104	4	0,006
20590852106	6	0,008
20590852108	8	0,009

without shutter

**9095 coupling with ribbed tailpiece, bulkhead**



Code	∅D	weight
20590952104	4	0,021
20590952106	6	0,026
20590952108	8	0,027

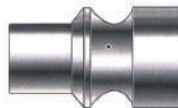
without shutter

Metallic quick couplings. 22 series. Flow: 1000 NI / min. Passage 5.5 mm.

**Simple shutter**



ARO 210  
CEJN 300  
ORION 44510  
Parker 50  
Rectus 14.22



The advanced technology of the **22 series** quick couplings allows for a **high flow rate**. This great capacity also allows them to adapt perfectly to a wide variety of facilities and tools:

- Small pneumatic tools
- Pneumatic automation
- Blow guns

They are totally **interchangeable** with the 14 series: with a single coupling for both series.

**9105 male body, conical BSP**



Code	C	weight
20591052213	R1/4	0,096
20591052217	R3/8	0,096
20591052221	R1/2	0,112

simple shutter

**9084 coupling with male thread, conical BSP**



Code	C	weight
20590842213	R1/4	0,022
20590842217	R3/8	0,027
20590842221	R1/2	0,052

without shutter

**9114 body with female thread, cylindrical BSP**



Code	C	weight
20591142213	G1/4	0,098
20591142217	G3/8	0,090
20591142221	G1/2	0,123

simple shutter

**9086 coupling with female thread, cylindrical BSP**



Code	C	weight
20590862213	G1/4	0,026
20590862217	G3/8	0,025
20590862221	G1/2	0,035

without shutter

**9123 body with ribbed tailpiece**



Code	∅D	weight
20591232206	6	0,093
20591232208	8	0,096
20591232210	10	0,097

simple shutter

**9085 coupling with ribbed tailpiece**



Code	∅D	weight
20590852206	6	0,014
20590852208	8	0,016
20590852209	9	0,015
20590852210	10	0,018
20590852213	13	0,023

without shutter

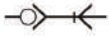
## >>> Metallic quick couplings

At [www.rodavigo.net](http://www.rodavigo.net)

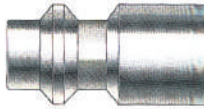
Family: Pneumatics  
Product: Legris pneumatic fittings

Metallic quick couplings. 23 series.. Flow: 1250 NI / min. Passage 5.5 mm.

### Simple shutter



ISO 6150 B  
AFNOR:  
NFE49.053  
US.MIL.C 4109  
CEJN 310  
Rectus 23.24



Equipped with an **Ultra-Flo valve**, the **23 series** quick couplings are used mainly in those cases that require excellent performance and high **flow**, with a small pressure drop.  
The guarantee to avoid the risk of a "whiplash", thanks to one of the four couplings in this range, reinforces the **safety** of the user when disconnecting.

### 9101 body with male thread, cylindrical BSP



Code	C	weight
20591012313	G1/4	0,094
20591012317	G3/8	0,095
20591012321	G1/2	0,112

simple shutter

### 9087 coupling with male thread, cylindrical BSP



Code	C	weight
20590872310	G1/8	0,017
20590872313	G1/4	0,023
20590872317	G3/8	0,025
20590872321	G1/2	0,046

without shutter

### 9114 body with female thread, cylindrical BSP



Code	C	weight
20591142313	G1/4	0,098
20591142317	G3/8	0,090
20591142321	G1/2	0,122

simple shutter

### 9086 coupling with female thread, cylindrical BSP



Code	C	weight
20590862310	G1/8	0,020
20590862313	G1/4	0,025
20590862317	G3/8	0,025
20590862321	G1/2	0,038

without shutter

### 9123 body with ribbed tailpiece



Code	∅D	weight
20591232306	6	0,094
20591232308	8	0,095
20591232310	10	0,096

simple shutter

### 9085 coupling with ribbed tailpiece



Code	∅D	weight
20590852306	6	0,016
20590852308	8	0,018
20590852310	10	0,020

without shutter

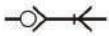
### 9293 anti-lash coupling with female thread



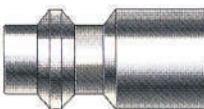
Code	C	weight
20592932313	G1/4	0,058

Metallic quick couplings. 24 series. Flow: 800 NI / min. Passage 5.5 mm.

### Simple shutter



ISO 6150 B  
AFNOR:  
NFE49.053  
US.MIL.C 4109  
CEJN 310  
Rectus 23.24



Equipped with a **needle** closing system, the **24 series** quick couplings are a very interesting economic solution. Its **interchangeability** with the 23 series, with a single type of coupling for both series, increases its advantages.  
Robust construction, they are suitable for any type of tooling or installation that works with compressed air.

### 9101 body with male thread, cylindrical BSP



Code	C	weight
20591012413	G1/4	0,086
20591012417	G3/8	0,088
20591012421	G1/2	0,100

simple shutter

### 9087 coupling with male thread, cylindrical BSP



Code	C	weight
20590872310	G1/8	0,017
20590872313	G1/4	0,023
20590872317	G3/8	0,025
20590872321	G1/2	0,047

without shutter

### 9114 body with female thread, cylindrical BSP



Code	C	weight
20591142413	G1/4	0,102
20591142417	G3/8	0,097
20591142421	G1/2	0,104

simple shutter

### 9086 coupling with female thread, cylindrical BSP



Code	C	weight
20590862310	G1/8	0,020
20590862313	G1/4	0,025
20590862317	G3/8	0,025
20590862321	G1/2	0,037

without shutter

>>> **Metallic quick couplings**



Metallic quick couplings. 24 series. Flow: 800 NI / min. Passage 5.5mm.

At www.rodavigo.net Family: Pneumatics  
Product: Legris pneumatic fittings

**Simple shutter**



**9123 body with ribbed tailpiece**

Code	∅D	weight
20591232406	6	0,086
20591232408	8	0,089
20591232410	10	0,100

simple shutter

**9085 coupling with ribbed tailpiece**



Code	∅D	weight
20590852306	6	0,016
20590852308	8	0,018
20590852310	10	0,020

without shutter

**9293 anti-lash coupling with female thread**



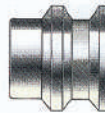
Code	C	weight
20592932313	G1/4	0,058

Metallic quick couplings. 25 series. Flow: 1700 NI / min. Passage 7.4 mm.

**Double and Single shutter**



CEJN 320  
Rectus 25.26



**Robust construction** (steel ring), the 25 series quick couplings are mainly recommended for **medium pneumatic tools, conduit entry and various types of small machinery.**

Flow optimization, thanks to **Ultra-flo** technology, gives this range:

- A very **important flow**
- A small pressure drop
- **Great economy**, with a significant reduction in the cost of energy.
- The great **variety of couplings** on offer allow solving the vast majority of installation problems that may arise.

**9201 body with male thread, cylindrical BSP**



Code	C	weight
20592012513	G1/4	0,098
20592012517	G3/8	0,097
20592012521	G1/2	0,113

double shutter

**9287-9087 coupling with male thread, cylindrical BSP**



Code	C	weight
20592872510	G1/8	0,045
20592872513	G1/4	0,046
20592872517	G3/8	0,048
20592872521	G1/2	0,055

with shutter

**9214 body with female thread, cylindrical BSP**



Code	C	weight
20592142513	G1/4	0,100
20592142517	G3/8	0,093
20592142521	G1/2	0,125

double shutter



Code	C	weight
20590872510	G1/8	0,019
20590872513	G1/4	0,019
20590872517	G3/8	0,028
20590872521	G1/2	0,047

without shutter

**9223 body with ribbed tailpiece**



Code	∅D	weight
20592232506	6	0,095
20592232508	8	0,098
20592232510	10	0,098
20592232513	13	0,102

double shutter

**9286-9086 coupling with female thread, cylindrical BSP**



Code	C	weight
20592862510	G1/8	0,060
20592862513	G1/4	0,062
20592862517	G3/8	0,057
20592862521	G1/2	0,064

with shutter

**9293 anti-lash coupling with female thread**



Code	C	weight
20592932517	G3/8	0,053



Code	C	weight
20590862510	G1/8	0,021
20590862513	G1/4	0,023
20590862517	G3/8	0,024
20590862521	G1/2	0,034

without shutter



## >>> Metallic quick couplings

At [www.rodavigo.net](http://www.rodavigo.net) Family: Pneumatics  
Product: Legris pneumatic fittings

Metallic quick couplings. 25 series. Flow: 1700 NI / min. Passage 7.4 mm.

### Double and Single shutter



Code	ØD	weight
20590852506	6	0,015
20590852508	8	0,016
20590852510	10	0,018
20590852513	13	0,022

without shutter

### 9085-9285 coupling with ribbed tailpiece



Code	ØD	weight
20592852506	6	0,047
20592852508	8	0,048
20592852510	10	0,049
20592852513	13	0,054

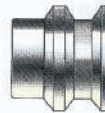
with shutter

Quick metal plugs. 26 series. Flow: 1000 NI / min. Passage 7.2 mm.

### Simple shutter



CEJN 320  
Rectus 25.26



### 9101 body with male thread, cylindrical BSP



Code	C	weight
20591012610	G1/8	0,083
20591012613	G1/4	0,086
20591012617	G3/8	0,097
20591012621	G1/2	1,010

simple shutter

### 9087 coupling with male thread, cylindrical BSP



Code	C	weight
20590872510	G1/8	0,016
20590872513	G1/4	0,019
20590872517	G3/8	0,028
20590872521	G1/2	0,047

without shutter

### 9114 body with female thread, cylindrical BSP



Code	C	weight
20591142613	G1/4	0,099
20591142617	G3/8	0,094
20591142621	G1/2	0,101

simple shutter

### 9086 coupling with female thread, cylindrical BSP



Code	C	weight
20590862510	G1/8	0,019
20590862513	G1/4	0,023
20590862517	G3/8	0,024
20590862521	G1/2	0,039

without shutter

The 26 series quick couplings are equipped with a needle locking system. The shape of the ring is specifically studied to avoid introduction of any type of impurities.

**Robust construction, they are fully interchangeable with the 25 series, with a single coupling for both series.**

Suitable to be used in any type of pneumatic installation

### 9085 coupling with ribbed tailpiece



Code	ØD	weight
20590852506	6	0,015
20590852509	9	0,017
20590852513	13	0,022

without shutter

Metallic quick couplings. 27 series. Flow: 3500 NI / min. Passage 10 mm.

### Double and Single shutter



CEJN 410  
Rectus 27



Equipped with an **Ultra-flo** valve, the 27 series quick couplings are characterized by a **high flow rate**, with a small pressure drop. Its **robust** construction allows them to easily adapt to installations such as:

- **Supply of great pneumatic tools;** - **Pressure line inputs;** - **Tooling for presses.**

Thanks to a safety coupling, the risk of a "whiplash" is avoided, thereby reinforcing user safety at the time of disconnection.

### 9201 body with male thread, cylindrical BSP



Code	C	weight
20592012717	G3/8	0,137
20592012721	G1/2	0,141
20592012727	G3/4	0,180

double shutter

### 9287-9087 coupling with male thread, cylindrical BSP



Code	C	weight
20592872717	G3/8	0,084
20592872721	G1/2	0,088
20592872727	G3/4	0,127

with shutter

Code	C	weight
20590872717	G3/8	0,039
20590872721	G1/2	0,047
20590872727	G3/4	0,071

without shutter



>>> **Metallic quick couplings**



Metallic quick couplings. 27 series. Flow: 800 NI / min. Passage 5.5 mm.

At www.rodavigo.net

Family: Pneumatics  
Product: Legris pneumatic fittings

**Double and Single shutter**



**9214 body with female thread, cylindrical BSP**



Code	C	weight
20592142717	G3/8	0,151
20592142721	G1/2	0,147
20592142727	G3/4	0,200

double shutter

**9223 body with ribbed tailpiece**



Code	ØD	weight
20592232708	8	0,149
20592232710	10	0,151
20592232713	13	0,153
20592232719	19	0,160

double shutter

**9293 anti-lash coupling with female thread**



Code	C	weight
20592932721	G1/2	0,070

**9286-9086 coupling with female thread, cylindrical BSP**



Code	C	weight
20592862717	G3/8	0,039
20592862721	G1/2	0,047
20592862727	G3/4	0,071

with shutter

Code	C	weight
20590862717	G3/8	0,026
20590862721	G1/2	0,042
20590862727	G3/4	0,088

without shutter

**9285-9085 coupling with ribbed tailpiece**



Code	ØD	weight
20592852708	8	0,096
20592852710	10	0,098
20592852713	13	0,100
20592852719	19	0,107

with shutter

Code	ØD	weight
20590852708	8	0,021
20590852710	10	0,025
20590852713	13	0,028
20590852719	19	0,042

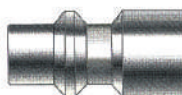
without shutter

Metallic quick couplings. 30 series. Flow: 1400 NI / min. Passage 8,5 mm.

**Simple shutter**



ISO 6150 B  
AFNOR:  
NFE49.053  
US.MIL.C 4109  
CEJN 430  
Rectus 30



Equipped with a needle locking system, the 30 series quick couplings are a very interesting economic solution. Robust construction, they are suitable for any type of tooling or installation it works with compressed air.

**9101 body with male thread, cylindrical BSP**



Code	C	weight
20591013013	G1/4	0,095
20591013017	G3/8	0,097
20591013021	G1/2	0,110

simple shutter

**9087 coupling with male thread, cylindrical BSP**



Code	C	weight
20590873013	G1/4	0,025
20590873017	G3/8	0,027
20590873021	G1/2	0,052

without shutter

**9114 body with female thread, cylindrical BSP**



Code	C	weight
20591143013	G1/4	0,112
20591143017	G3/8	0,107
20591143021	G1/2	0,114

simple shutter

**9086 coupling with female thread, cylindrical BSP**



Code	C	weight
20590863013	G1/4	0,028
20590863017	G3/8	0,028
20590863021	G1/2	0,041

without shutter

**9223 body with ribbed tailpiece**



Code	ØD	weight
20591233008	8	0,095
20591233010	10	0,098
20591233013	13	0,110

simple shutter

**9085 coupling with ribbed tailpiece**

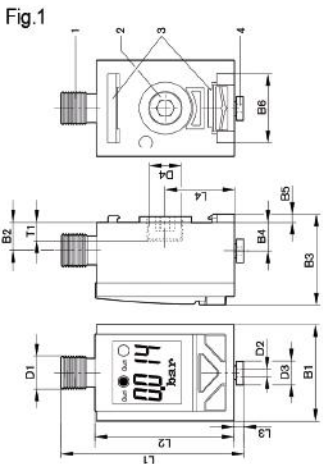


Code	ØD	weight
20590853008	8	0,018
20590853010	10	0,019
20590853013	13	0,022

without shutter

## Pressure measurement sensor, PE5 Series

At [www.rodavigo.net](http://www.rodavigo.net) Family: Pneumatics  
Product: Mannesmann Mecman Cpoac Bosch Rexroth Pneumatics



1) Electrical connection: 2) G 1/4 connection (closed) 3) Fixing clips for support and profile rail 4) Push-in fitting Ø4 mm

Code	Type	Range of Pressure of connection min./max. (Bar)	Security versus overpressures	Output signal	Compressed air connection	Fig.
618R412010164	PE5-PP-DA04	-1 / 0	5 bar	1 x PNP y 1 x analogical	Instant fitting	Fig. 1
618R412010165	PE5-PP-G014	-1 / 0	5 bar	1 x PNP y 1 x analogical	internal thread	Fig. 2
618R412007982	PE5-PP-DA04	0 / 6	15 bar	1 x PNP y 1 x analogical	Instant fitting Ø4	Fig. 1
618R412007986	PE5-PP-DA04	0 / 10	15 bar	1 x PNP y 1 x analogical	Instant fitting Ø4	Fig. 1
618R412007983	PE5-PP-G014	0 / 6	15 bar	1 x PNP y 1 x analogical	internal thread G 1/4	Fig. 2
618R412007987	PE5-PP-G014	0 / 10	15 bar	1 x PNP y 1 x analogical	internal thread G 1/4	Fig. 2
618R412007984	PE5-NP-DA04	0 / 6	15 bar	1 x NPN y 1 x analogical	Instant fitting Ø4	Fig. 1
618R412007988	PE5-NP-DA04	0 / 10	15 bar	1 x NPN y 1 x analogical	Instant fitting Ø4	Fig. 1
618R412007985	PE5-NP-G014	0 / 6	15 bar	1 x NPN y 1 x analogical	internal thread G 1/4	Fig. 2
618R412007989	PE5-NP-G014	0 / 10	15 bar	1 x NPN y 1 x analogical	internal thread G 1/4	Fig. 2

analog output signal: switchable; 4 - 20 mA; 0 - 10 V DC

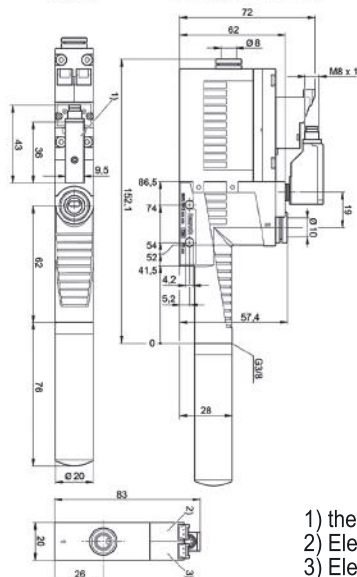
Compressed air connection	B1	B2	B3	B4	B5	B6	D1	D2	D3	D4	L1	L2	L3	L4	T1
Push-in fitting Ø4	35	10,2	33	10,2	3	25	M12x1	4	7,5	G 1/4	67,3	50,5	3,5	25	9,5

## >>> Ejectors

### Ejector, EBS Series



Fig. 3



Code	Type	Ø of the nozzles	Compressed air connection do	Vacuum connection	Vacuum max. with p.opt [%]	Max. aspiration capacity [l/min]
618R412010168	EBS-ET-05-NC	0,5			84	7,5
618R412010169	EBS-ET-07-NC	0,7	Ø4	Ø4	85	16,8
618R412010170	EBS-ET-10-NO	1	Ø6	Ø8	86	35
618R412010171	EBS-ET-15-NO	1,5			84	71
618R412010172	EBS-ET-20-NO	2	Ø8	Ø8	86	123
618R412010173	EBS-ET-25-NO	2,5			84	223

Code	Air consumption with p.opt. [l/min]	Acoustic intensity level aspirated [dBA]	Acoustic intensity level aspirating [dBA]	Overpressure safety [max] [bar]	Weight [kg]	Fig.
618R412010168	14	53	58	5	0,041	Fig. 1
618R412010169	24	65	68	5	0,07	Fig. 2
618R412010170	48	59	65	5	0,154	Fig. 3
618R412010171	118	71	71			
618R412010172	208	68	77			
618R412010173	320	70	78			

NC = ejector suction line closed without current  
NO = ejector suction power without current, open  
Output signal: 2 x PNP, NO (working contact)

- 1) the vacuum switch is rotatable and interchangeable
- 2) Electrically operated valve, vacuum on / off
- 3) Electrically actuated release impulse valve



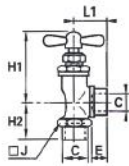
## >>> Punch taps

### Punch taps

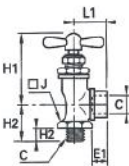
At www.rodavigo.net Family: Pneumatics  
Product: Legris pneumatic fittings



nickel plated shot blast brass



nickel plated shot blast brass



### 0532 male-female elbow, cylindrical BSP thread

Code	C		E	Hmax	H1min	H2	J	L1	Weight
20505320410	G 1/8	4	9	52	46	19	17	19	0,085
20505320413	G 1/4	4	11	52	46	21	17	21	0,095
20505320613	G 1/4	6	11	53	55	26	22	26	0,175

### 0531 male-female elbow, cylindrical BSP thread

Code	C		E1	E1	Hmax	H1min	H2	J	L/2	Weight
20505310410	G 1/8	4	7	9	52	46	19	17	19	0,080
20505310413	G 1/4	4	9,5	11	52	46	21	17	21	0,085
20505310613	G 1/4	6	9,5	11	63	55	25	22	26	0,170
20505310617	G 3/8	6	9,5	12	63	55	25	22	27	0,195
20505311021	G 1/2	10	13	16	72	62	34	26	33	0,310

## >>> Filtering groups

### F.R.L. components for air treatment. UZ series

#### General

The UZ series includes FRL groups, miniature, 1/8" and 1/4". It is a series that offers a very wide use with a varied range of models.

**The filter** offers a double choice of filter element

**The regulator** is built in two versions, one for coupling with filter and lubricator, the other to be used separately in-line, with panel mounting or by bracket. It is available in the relieving and non-relieving versions with three ranges of reduced pressure regulation.

**The lubricator** it is offered in fog or micro-fog versions.

The possibility of varying the range of the flow rates of use is foreseen by acting on the appropriate cam that in position C presents the Venturi closed, while in A the Venturi is open. The cam is clearly visible on the inside of the lubricator once the glass is removed. The lubricator is normally supplied with the Venturi open. It is recommended to vary more or less This predisposition when, after consulting the flow values in the table, a specific value is chosen.

#### Special features

- Possibility of using each element separately.
- Modularity between filter, reducer and lubricator.
- Possibility of line, wall and panel mounting.
- Extreme ease for the assembly of the bodies by means of screws.
- As an option, with metallic protection of the transparent cup.
- Maximum pressure 12 bar.
- Compact design.
- Regulators in double version to use separately (in-line or on panel) or also coupled to the filter and the lubricator.



UZF

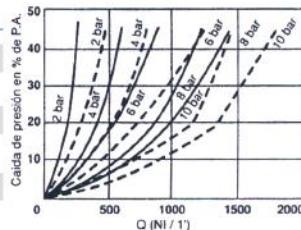
UZR

### Filter



#### Technical characteristics

Connections	1/8", 1/4"
Max pressure	12 bar
Temperature	-10°C ÷ +50°C
Filtering capacity	20µm 5µm
Cartridge construction	Synthetic bronze



Codes	Codes	Description
1/8 "connections	1/4 "connections	
069UZF820	069UZF420	Filter: filter element 20µm
069UZF85	069UZF45	Filter: filter element 5µm

With metallic protection. Add the PM suffix to the reference

At www.rodavigo.net Family: Pneumatics  
Product: Waircom Material

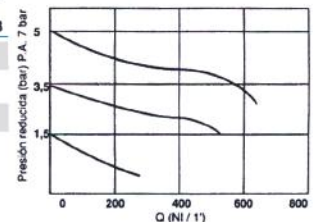
### Regulator

At www.rodavigo.net Family: Pneumatics  
Product: Waircom Material



#### Technical characteristics

Connections	1/8", 1/4"
Max. pressure	12 bar
Temperature	-10°C ÷ +50°C
Low pressure range	0,07 ÷ 1,5 bar 0,35 ÷ 4 bar 0,7 ÷ 8,5 bar



Codes	Codes	Description
1/8 "connections	1/4 "connections	
069UZRM83B	069UZRM43B	Regulator no relieving 0,07 ÷ 1,5 bar
069UZRM85B	069UZRM45B	Regulator no relieving 0,35 ÷ 4 bar
069UZRM87B	069UZRM47B	Regulator no relieving 0,7 ÷ 8,5 bar
069UZRRM83B	069UZRRM43B	Relieving regulator 0,07 ÷ 1,5 bar
069UZRRM85B	069UZRRM45B	Relieving regulator 0,35 ÷ 4 bar
069UZRRM87B	069UZRRM47B	Relieving regulator 0,7 ÷ 8,5 bar

## >>> Filtering groups

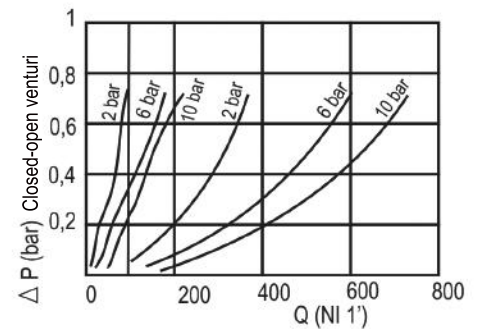
At [www.rodavigo.net](http://www.rodavigo.net) Family: Pneumatics  
Product: Waircom Material

F.R.L. components for air treatment.  
Lubricator, filter-regulator and shut-off valve

### Lubricator

#### Technical characteristics

Connections	1/8", 1/4"	
Max pressure	12 bar	
Temperature	-10°C ÷ +50°C	
Flow min. at 6 bar	25 nl/1'	Venturi closed (pos. C)
	85 nl/1'	Venturi open (pos. A)
Max flow with P = 1 and Pa = 6 bar	180 nl/1'	Venturi closed (pos. C)
	600 nl/1'	Venturi open (pos. A)



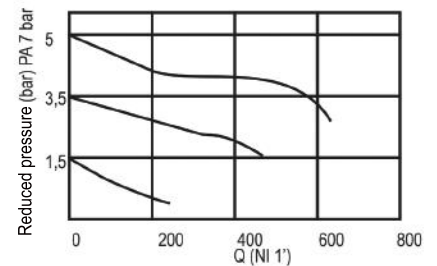
Codes 1/8 "connections	Codes 1/4 "connections	Description
069UZL8	069UZL4	Fog lubricator
069UZL8PM	069UZL4PM	Metallic protection lubricator - fog

### Filter regulator

#### Technical characteristics

Connections	1/8", 1/4"	
Max pressure	12 bar	
Temperature	-10°C ÷ +50°C	
Low pressure	0,07 ÷ 1,5 bar	
range	0,35 ÷ 4 bar	
	0,7 ÷ 8,5 bar	
Filtering capacity	20 o 5	
Cartridge construction	Synthetic bronze	

UZRM.../F..B



Codes 1/8 "connections	Codes 1/4 "connections	Description
069UZRM83F20B	069UZRM43F20B	Regulator no relieving 0,07 ÷ 1,5 bar Filter: filter element 20
069UZRM85F20B	069UZRM45F20B	Regulator no relieving 0,35 ÷ 4 bar Filter: filter element 20
069UZRM87F20B	069UZRM47F20B	Regulator no relieving 0,7 ÷ 8,5 bar Filter: filter element 20
069UZRRM83F5B	069UZRRM43F5B	Relieving regulator 0,07 ÷ 1,5 bar Filter: filter element 5
069UZRRM85F5B	069UZRRM45F5B	Relieving regulator 0,35 ÷ 4 bar Filter: filter element 5
069UZRRM87F5B	069UZRRM47F5B	Relieving regulator 0,7 ÷ 8,5 bar Filter: filter element 5
069UZRM83F20B	069UZRM43F20B	Regulator no relieving 0,07 ÷ 1,5 bar Filter: filter element 20
069UZRM85F20B	069UZRM45F20B	Regulator no relieving 0,35 ÷ 4 bar Filter: filter element 20
069UZRM87F20B	069UZRM47F20B	Regulator no relieving 0,7 ÷ 8,5 bar Filter: filter element 20
069UZRRM83F5B	069UZRRM43F5B	Relieving regulator 0,07 ÷ 1,5 bar Filter: filter element 5
069UZRRM85F5B	069UZRRM45F5B	Relieving regulator 0,35 ÷ 4 bar Filter: filter element 5
069UZRRM87F5B	069UZRRM47F5B	Relieving regulator 0,7 ÷ 8,5 bar Filter: filter element 5



## >>> Filtering groups

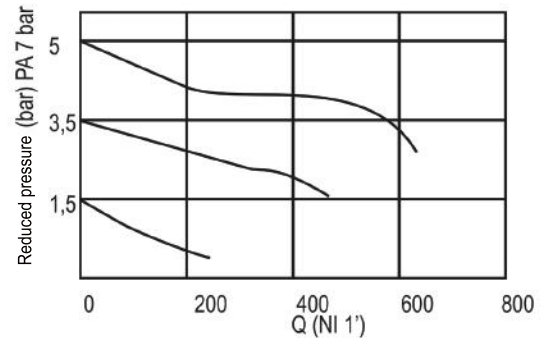
F.R.L. components for air treatment. UZ series

At www.rodavigo.net Family: Pneumatics  
Product: Waircom Material



### Technical characteristics

Connections	1/8", 1/4"
Max pressure	12 bar
Temperature	-10°C ÷ +50°C
Low pressure range	0,07 ÷ 1,5 bar 0,35 ÷ 4 bar 0,7 ÷ 8,5 bar
Mounting	In-line on bracket or panel



Codes 1/8 "connections	Codes 1/4 "connections	Description
069UZRH8320B	069UZRH4320B	Regulator no relieving 0,07 ÷ 1,5 bar
069UZRH8520B	069UZRH4520B	Regulator no relieving 0,35 ÷ 4 bar
069UZRH8720B	069UZRH4720B	Regulator no relieving 0,7 ÷ 8,5 bar
069UZRRH83B	069UZRRH43B	Relieving regulator 0,07 ÷ 1,5 bar
069UZRRH85B	069UZRRH45B	Relieving regulator 0,35 ÷ 4 bar
069UZRRH87B	069UZRRH47B	Relieving regulator 0,7 ÷ 8,5 bar

## F.R.L. sets for air treatment. UZ series

Code	Metallic protection	Connections	Filter	Filter regulator	Lubricator	Manometer
069FRL4UZ	NO	G 1/4	069UZZF420	069UZRRM47F20B	069UZL4	069MM012
069FRL4PUZ		G 1/4	069UZZF420	069UZRRM47F20B	069UZL4	069MM012
069FRRL4UZ		G 1/4		069UZRRM47F20B	069UZL4	069MM012
069FRRL4PUZ		G 1/4		069UZRRM47F20B	069UZL4	069MM012
069FL4UZ		G 1/4	069UZZF420		069UZL4	069MM012
069FL4PUZ		G 1/4	069UZZF420		069UZL4	069MM012
069FRL4UZPM	YES	G 1/4	069UZZF420PM	069UZRRM47F20PM	069UZL4PM	069MM012
069FRL4PUZPM		G 1/4	069UZZF420PM	069UZRRM47F20PM	069UZL4PM	069MM012
069FRRL4UZPM		G 1/4		069UZRRM47F20PM	069UZL4PM	069MM012
069FRRL4PUZPM		G 1/4		069UZRRM47F20PM	069UZL4PM	069MM012
069FL4UZPM		G 1/4	069UZZF420PM		069UZL4PM	069MM012
069FL4PUZPM		G 1/4	069UZZF420PM		069UZL4PM	069MM012
069FRL8UZ	NO	G 1/8	069UZZF820	069UZRRM87F20B	069UZL8	069MM012
069FRL8PUZ		G 1/8	069UZZF820	069UZRRM87F20B	069UZL8	069MM012
069FRRL8UZ		G 1/8		069UZRRM87F20B	069UZL8	069MM012
069FRRL8PUZ		G 1/8		069UZRRM87F20B	069UZL8	069MM012
069FL8UZ		G 1/8	069UZZF820		069UZL8	069MM012
069FL8PUZ		G 1/8	069UZZF820		069UZL8	069MM012
069FRL8UZPM	YES	G 1/8	069UZZF820PM	069UZRRM87F20PM	069UZL8PT	069MM012
069FRL8PUZPM		G 1/8	069UZZF820PM	069UZRRM87F20PM	069UZL8PT	069MM012
069FRRL8UZPM		G 1/8		069UZRRM87F20PM	069UZL8PT	069MM012
069FRRL8PUZPM		G 1/8		069UZRRM87F20P	069UZL8PT	069MM012
069FL8UZPM		G 1/8	069UZZF820PM		069UZL8PT	069MM012
069FL8PUZPM		G 1/8	069UZZF820PM		069UZL8PT	069MM012